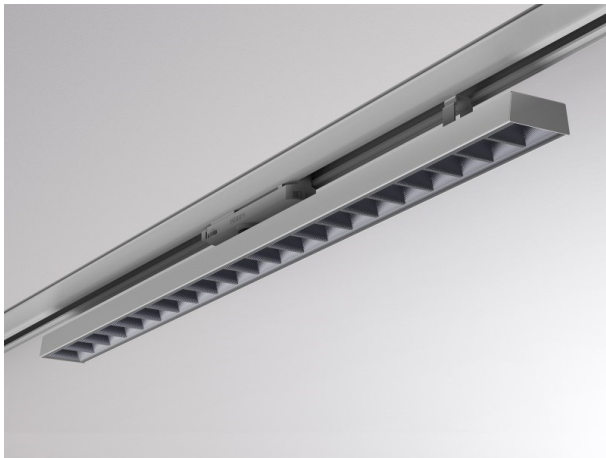


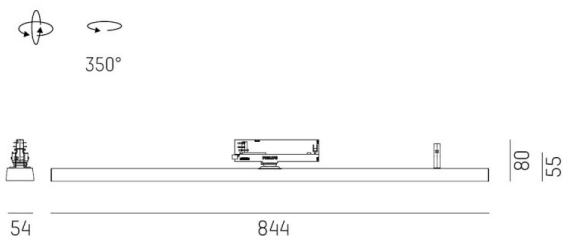
VARIDO 2

149-00102021904p

VARIDO 2 DARK TRACK TRACK SPOTLIGHT WITH 3 PH ADAPTER made of steel sheet, grey matt, similar to RAL 9004, Lens optics with vacuum deposited Dark reflector beam 66°, light output direct, UGR <19, swiveling 350°, with converter, max. 850mA, dimmability: Pulse-DALI, adapter/ceiling base grey, IP20



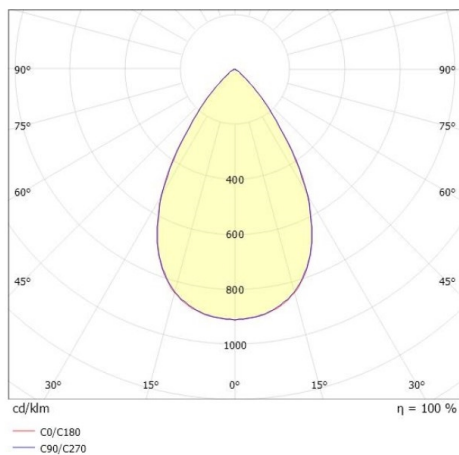
DRAWING



TECHNICAL DETAILS

| | |
|-----------------------------|--|
| System perform. [W] | 32 |
| Bulb type | LED |
| Luminous flux [lm] | 3860 |
| Current sec. [mA] | 850 |
| Colour temp. [K] | 3000K |
| CRI | >80 |
| UGR | <19 |
| Optics | Lens optics with vacuum deposited Dark reflector |
| Designer | INHOUSE |
| Converter | with converter |
| Light output | direct |
| Beam angle [°] | 66° |
| Voltage [V] | 220-240V 50/60Hz |
| Material | steel sheet |
| Length [mm] | 844 |
| Width [mm] | 54 |
| Height [mm] | 24 |
| IP protection class | IP20 |
| Voltage class | protection cl. II |
| Net weight [kg] | 1,54 |
| Colour lamp | grey matt |
| RAL | 9004 |
| Colour adapter/ceiling base | grey |
| EAN-Number | 9010506112023 |
| Lifetime [h] | L80 B10 50 000 |
| Energy efficiency cl. | C |
| No. of luminaires B16A | 50 |

LIGHT DISTRIBUTION CURVE



The values are rated values. Power and luminous flux are initially subject to a tolerance of +/- 10%. Colour temperature tolerance: +/- 150 K. The values apply to an ambient temperature of 25°C unless otherwise specified.