

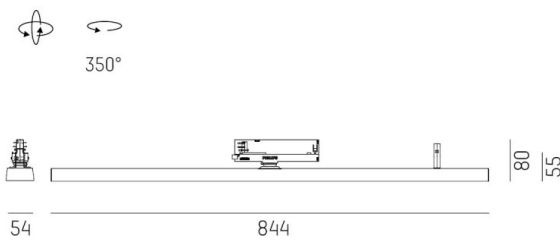
VARIDO 2

149-00203011306p

VARIDO 2 ASYM TRACK TRACK SPOTLIGHT WITH 3 PH ADAPTER made of steel sheet, black matt, similar to RAL 9005, decor black, Lens optics with vacuum deposited synthetic reflector beam asymmetric, light output direct, swiveling 350°, with converter, max. 1050mA, dimmability: Pulse-DALI, adapter/ceiling base black, IP20



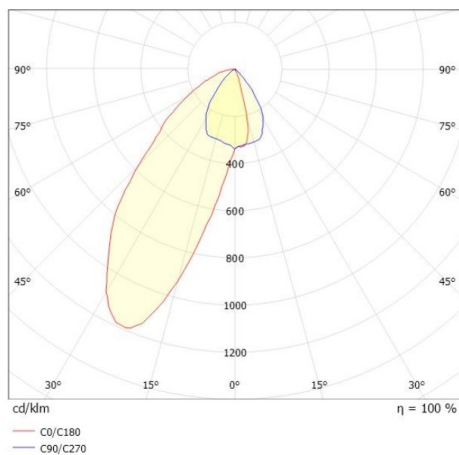
DRAWING



TECHNICAL DETAILS

System perform. [W]	31
Bulb type	LED
Luminous flux [lm]	2940
Current sec. [mA]	1050
Colour temp. [K]	2700K
CRI	>80
Optics	Lens optics with vacuum deposited synthetic reflector
Designer	INHOUSE
Converter	with converter
Light output	direct
Beam angle [°]	asymmetrisch
Voltage [V]	220-240V 50/60Hz
Material	steel sheet
Length [mm]	844
Width [mm]	54
Height [mm]	24
IP protection class	IP20
Voltage class	protection cl. II
Net weight [kg]	1,57
Colour lamp	black matt
RAL	9005
Colour adapter/ceiling base	black
Colour decor	black
EAN-Number	9010506112276
Lifetime [h]	L80 B10 50 000
Energy efficiency cl.	C
No. of luminaires B16A	50

LIGHT DISTRIBUTION CURVE



The values are rated values. Power and luminous flux are initially subject to a tolerance of +/- 10%. Colour temperature tolerance: +/- 150 K. The values apply to an ambient temperature of 25°C unless otherwise specified.