

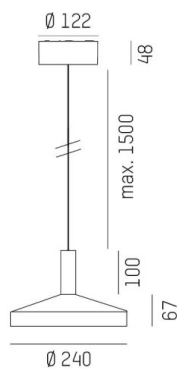
LORA

176-1020200029560

LORA 2 PD SUSPENSION made of steel, white, similar to RAL 9003, white black, beam 42°, light output direct, with converter, max. 500mA, dimmability: not dimmable, cable white, adapter/ceiling base white, pendant length 1500mm, IP20



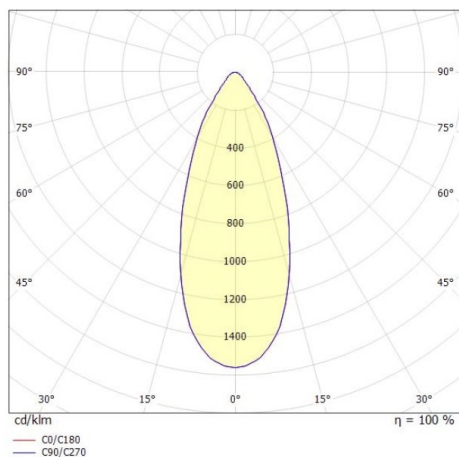
DRAWING



TECHNICAL DETAILS

System perform. [W]	10
Bulb type	LED
Luminous flux [lm]	680
Current sec. [mA]	500
Colour temp. [K]	3000K
CRI	>90
Converter	with converter
Dimming	not dimmable
Light output	direct
Beam angle [°]	42°
Voltage [V]	220-240V 50/60Hz
Material	steel
Length [mm]	240
Height [mm]	67
Pendant length [mm]	1500
Diameter [mm]	240
IP protection class	IP20
Voltage class	protection cl. I
Net weight [kg]	0,91
Colour lamp	white
RAL	9003
Colour of glass/shade	white black
Colour adapter/ceiling base	white
Electric wire	white
EAN-Number	9010506764932
Lifetime [h]	L80 B10 20 000
Energy efficiency cl.	F

LIGHT DISTRIBUTION CURVE



The values are rated values. Power and luminous flux are initially subject to a tolerance of +/- 10%. Colour temperature tolerance: +/- 150 K. The values apply to an ambient temperature of 25°C unless otherwise specified.