

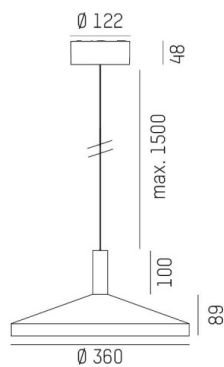
LORA

176-102030002366d

LORA 3 PD SUSPENSION made of steel, black, similar to RAL 7016, white black, beam 42°, light output direct, with converter, max. 500mA, dimmability: DALI, cable black, adapter/ceiling base black, pendant length 1500mm, IP20



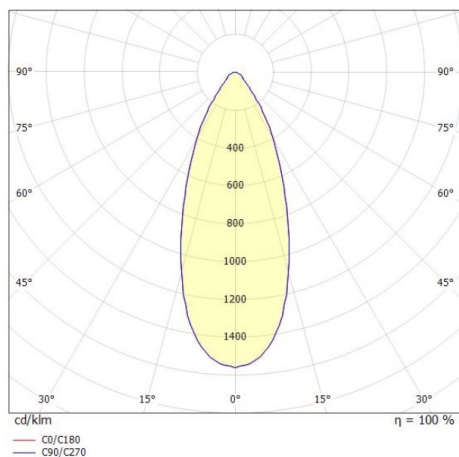
DRAWING



TECHNICAL DETAILS

|                             |                  |
|-----------------------------|------------------|
| System perform. [W]         | 10               |
| Bulb type                   | LED              |
| Luminous flux [lm]          | 700              |
| Current sec. [mA]           | 500              |
| Colour temp. [K]            | 2700K            |
| CRI                         | >90              |
| Converter                   | with converter   |
| Light output                | direct           |
| Beam angle [°]              | 42°              |
| Voltage [V]                 | 220-240V 50/60Hz |
| Material                    | steel            |
| Length [mm]                 | 360              |
| Height [mm]                 | 89               |
| Pendant length [mm]         | 1500             |
| Diameter [mm]               | 360              |
| IP protection class         | IP20             |
| Voltage class               | protection cl. I |
| Net weight [kg]             | 1,29             |
| Colour lamp                 | black            |
| RAL                         | 7016             |
| Colour of glass/shade       | white black      |
| Colour adapter/ceiling base | black            |
| Electric wire               | black            |
| EAN-Number                  | 9010506764819    |
| Lifetime [h]                | L80 B10 20 000   |
| Energy efficiency cl.       | F                |

LIGHT DISTRIBUTION CURVE



The values are rated values. Power and luminous flux are initially subject to a tolerance of +/- 10%. Colour temperature tolerance: +/- 150 K. The values apply to an ambient temperature of 25°C unless otherwise specified.