

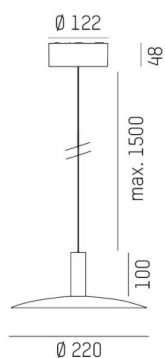
LORA

176-102040002356d

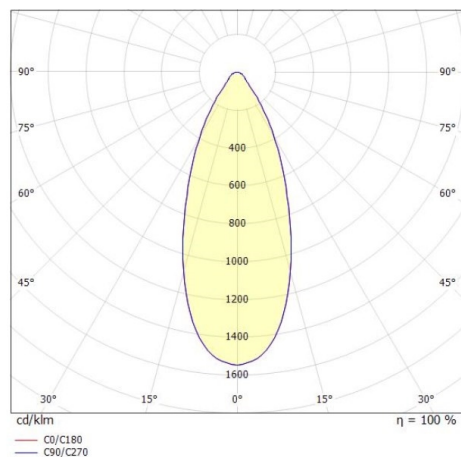
LORA 4 PD SUSPENSION made of steel, white, similar to RAL 9003, white black, beam 42°, light output direct, with converter, max. 500mA, dimmability: DALI, cable white, adapter/ceiling base white, pendant length 1500mm, IP20



DRAWING



LIGHT DISTRIBUTION CURVE



TECHNICAL DETAILS

| | |
|-----------------------------|------------------|
| System perform. [W] | 10 |
| Bulb type | LED |
| Luminous flux [lm] | 690 |
| Current sec. [mA] | 500 |
| Colour temp. [K] | 2700K |
| CRI | >90 |
| Converter | with converter |
| Light output | direct |
| Beam angle [°] | 42° |
| Voltage [V] | 220-240V 50/60Hz |
| Material | steel |
| Length [mm] | 221,9 |
| Height [mm] | 100 |
| Pendant length [mm] | 1500 |
| Diameter [mm] | 220 |
| IP protection class | IP20 |
| Voltage class | protection cl. I |
| Net weight [kg] | 0,97 |
| Colour lamp | white |
| RAL | 9003 |
| Colour of glass/shade | white black |
| Colour adapter/ceiling base | white |
| Electric wire | white |
| EAN-Number | 9010506764697 |
| Lifetime [h] | L80 B10 20 000 |
| Energy efficiency cl. | F |



The values are rated values. Power and luminous flux are initially subject to a tolerance of +/- 10%. Colour temperature tolerance: +/- 150 K. The values apply to an ambient temperature of 25°C unless otherwise specified.