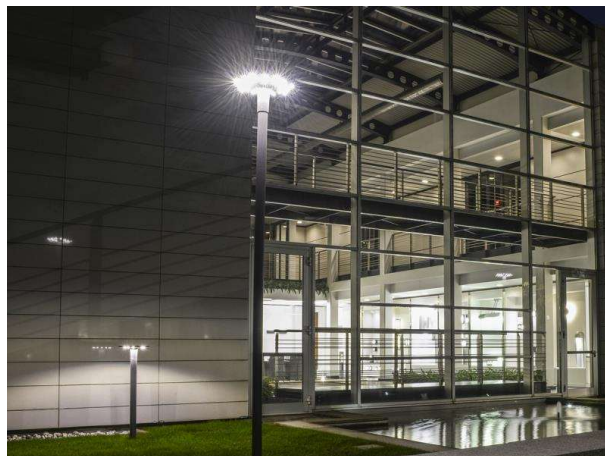


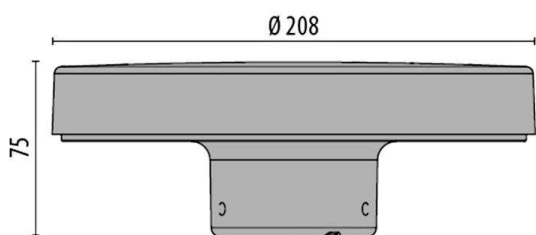
PADO

187-30409490100

PADO POLE LUMINAIRE made of aluminium, black, satined glass light output direct, with converter, dimmability: not dimmable, IP65



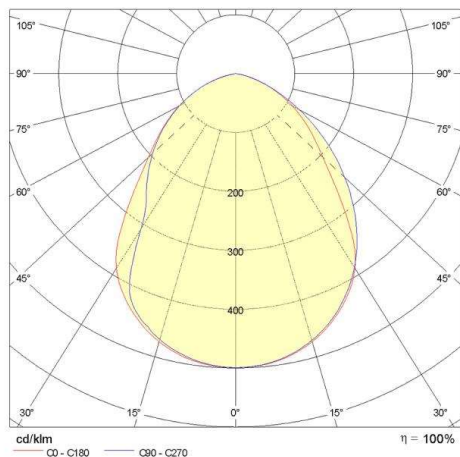
DRAWING



TECHNICAL DETAILS

System perform. [W]	20
Bulb type	LED
Luminous flux [lm]	1160
Colour temp. [K]	4000K
CRI	>80
Optics	satined glass
Converter	with converter
Dimming	not dimmable
Light output	direct
Voltage [V]	220-240V 50/60Hz
Material	aluminium
Height [mm]	75
Diameter [mm]	208
IP protection class	IP65
Voltage class	protection cl. I
Shock resistance	IK05
Net weight [kg]	0,94
Color lamp	black
EAN-Number	8018367635010
Lifetime [h]	60 000

LIGHT DISTRIBUTION CURVE



The values are rated values. Power and luminous flux are initially subject to a tolerance of +/- 10%. Colour temperature tolerance: +/- 150 K. The values apply to an ambient temperature of 25°C unless otherwise specified.