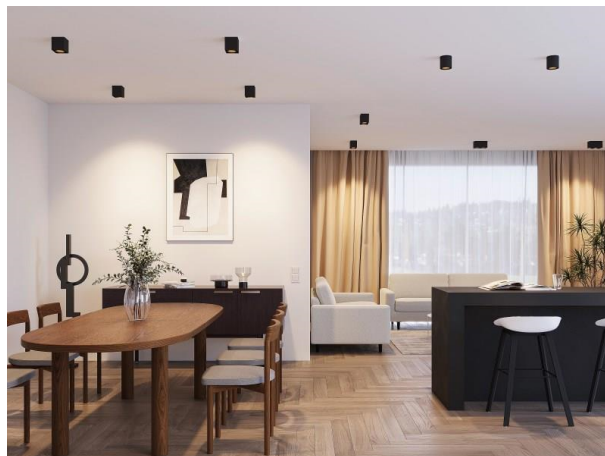


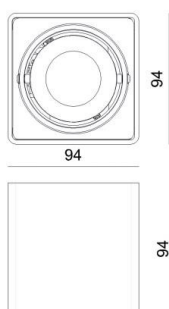
## QANA

222-00012

QANA SQUARE SD SURFACE MOUNTED CEILING LUMINAIRE made of aluminium, black, similar to RAL 9005, light output direct, swiveling 350°, tilting 20°, dimmability: see light source, IP20



## DRAWING



## TECHNICAL DETAILS

Bulb type	QPAR 16 8W
No. of bulb holders	1x
Socket	GU10
Dimming	see light source
Light output	direct
Voltage [V]	220-240V 50/60Hz
Material	aluminium
Length [mm]	94
Width [mm]	94
Height [mm]	94
IP protection class	IP20
Voltage class	protection cl. I
Net weight [kg]	0,55
Colour lamp	black
RAL	9005
EAN-Number	9010870140714

## LIGHT DISTRIBUTION CURVE



energy label



The values are rated values. Power and luminous flux are initially subject to a tolerance of +/- 10%. Colour temperature tolerance: +/- 150 K. The values apply to an ambient temperature of 25°C unless otherwise specified.