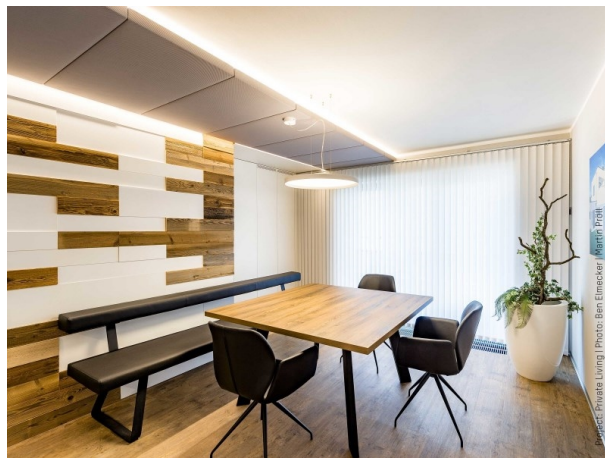


PREMIUM

283-240565nwkonf



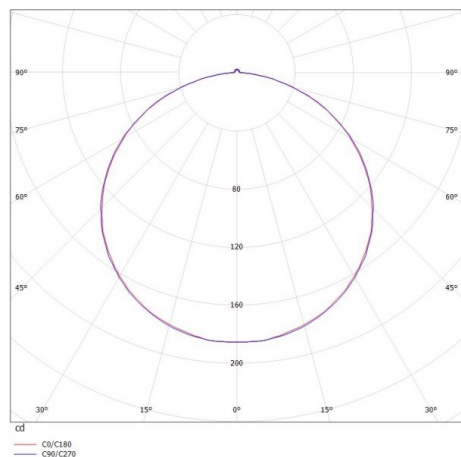
DRAWING



TECHNICAL DETAILS

| | |
|-----------------------|----------------------|
| Bulb type | SMD LED 5W PRO METER |
| Luminous flux [lm] | 580 |
| Colour temp. [K] | 4000K |
| CRI | >90 |
| Converter | without converter |
| Dimming | see converter |
| Light output | direct |
| Beam angle [°] | 120° |
| Voltage [V] | 24 VDC |
| Material | synthetic |
| Length [mm] | 1000 |
| Width [mm] | 5 |
| Height [mm] | 1,4 |
| IP protection class | IP65 |
| Voltage class | protection cl. III |
| Net weight [kg] | 0,70 |
| EAN-Number | 9010506047776 |
| Lifetime [h] | L80 B10 20 000 |
| Energy efficiency cl. | F |

LIGHT DISTRIBUTION CURVE



The values are rated values. Power and luminous flux are initially subject to a tolerance of +/- 10%. Colour temperature tolerance: +/- 150 K. The values apply to an ambient temperature of 25°C unless otherwise specified.