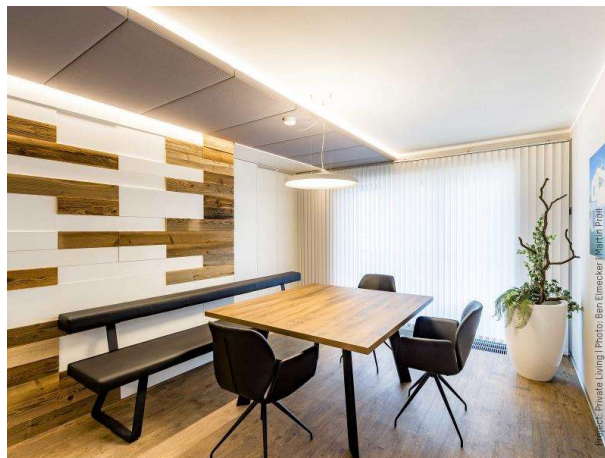


## PREMIUM

283-240565uuwwkonf



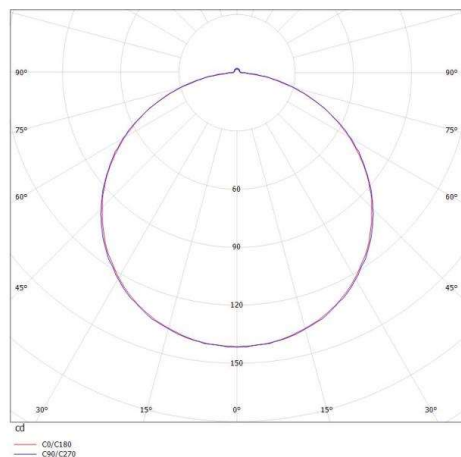
## DRAWING



## TECHNICAL DETAILS

Bulb type	SMD LED 5W PRO METER
Luminous flux [lm]	440
Colour temp. [K]	2500K
CRI	>90
Converter	without converter
Dimming	see converter
Light output	direct
Beam angle [°]	120°
Voltage [V]	24 VDC
Material	synthetic
Length [mm]	1000
Width [mm]	5
Height [mm]	1,4
IP protection class	IP65
Voltage class	protection cl. III
Net weight [kg]	0,70
EAN-Number	9010506048667
Lifetime [h]	L80 B10 20 000
Energy efficiency cl.	F

## LIGHT DISTRIBUTION CURVE



The values are rated values. Power and luminous flux are initially subject to a tolerance of +/- 10%. Colour temperature tolerance: +/- 150 K. The values apply to an ambient temperature of 25°C unless otherwise specified.