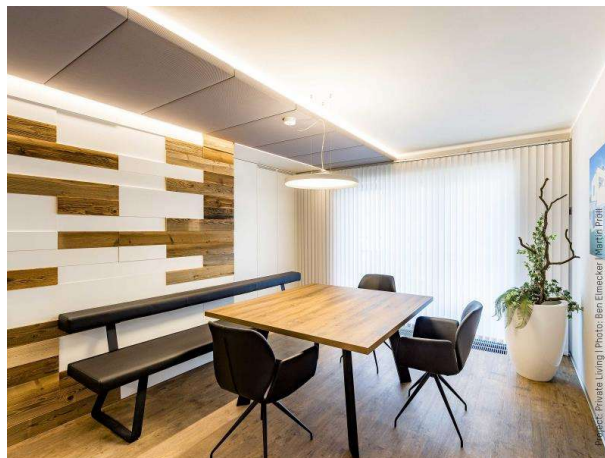


PREMIUM

283-241865uuww

Flexible PREMIUM LED strip, IP65 using plasma coating, selling by the meter, 120 LEDs (SMD2835) per meter, 18W/meter, separable each 5cm, fixation with double-sided adhesive 3M tape, excl. converter, CRI>90, 2500K, ATTENTION: max. length per power feed point: 6 meter

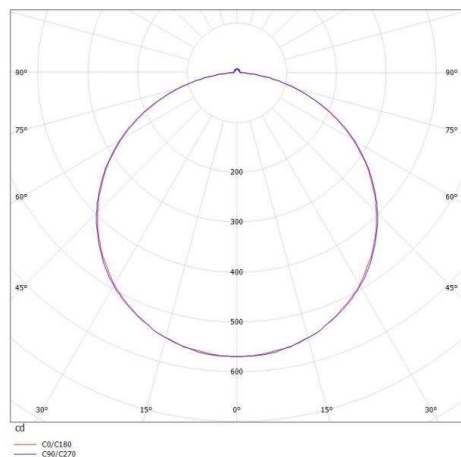


DRAWING

TECHNICAL DETAILS

Bulb type	SMD LED 18W PRO METER
Luminous flux [lm]	1755
Colour temp. [K]	2500K
CRI	>90
Converter	without converter
Dimming	see converter
Light output	direct
Beam angle [°]	120°
Voltage [V]	24 VDC
Material	synthetic
Length [mm]	30000
Width [mm]	8
Height [mm]	1,4
IP protection class	IP65
Voltage class	protection cl. III
Net weight [kg]	0,36
EAN-Number	9010506618655
Lifetime [h]	L80 B10 20 000
Energy efficiency cl.	F

LIGHT DISTRIBUTION CURVE



The values are rated values. Power and luminous flux are initially subject to a tolerance of +/- 10%. Colour temperature tolerance: +/- 150 K. The values apply to an ambient temperature of 25°C unless otherwise specified.