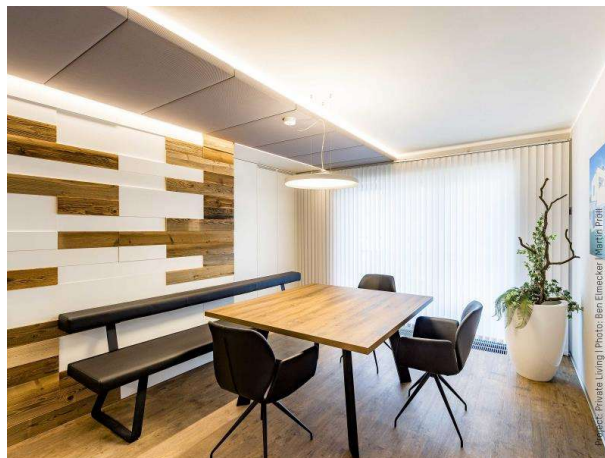


PREMIUM

283-242865uuww

Flexible PREMIUM LED stripe, IP65 through plasma coating, per meter, 120 LEDs SMD 2835 / meter, 28W/ meter, separable each 5 cm, fixation with double-sided adhesive 3M tape, excl. converter, CRI>90, 2500K, ATTENTION: maximal length pro feed point 4m

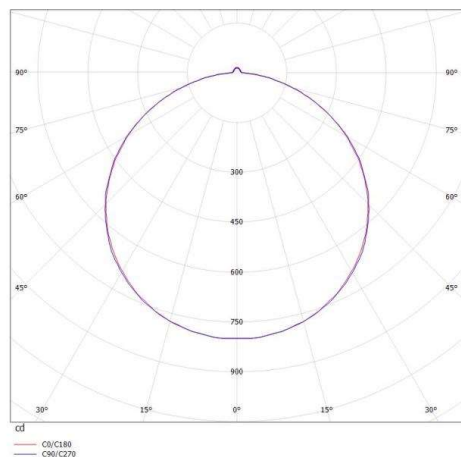


DRAWING

TECHNICAL DETAILS

Bulb type	SMD LED 28W PRO METER
Luminous flux [lm]	2500
Colour temp. [K]	2500K
CRI	>90
Converter	without converter
Dimming	see converter
Light output	direct
Beam angle [°]	120°
Voltage [V]	24 VDC
Material	synthetic
Length [mm]	30000
Width [mm]	8
Height [mm]	1,4
IP protection class	IP65
Voltage class	protection cl. III
Net weight [kg]	0,35
EAN-Number	9010506618709
Lifetime [h]	L80 B10 20 000
Energy efficiency cl.	F

LIGHT DISTRIBUTION CURVE



The values are rated values. Power and luminous flux are initially subject to a tolerance of +/- 10%. Colour temperature tolerance: +/- 150 K. The values apply to an ambient temperature of 25°C unless otherwise specified.