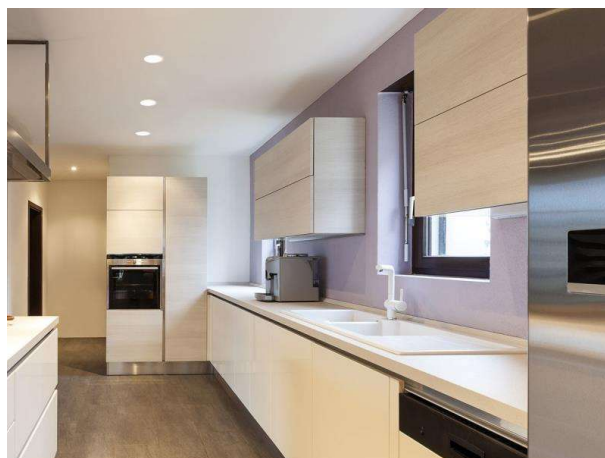
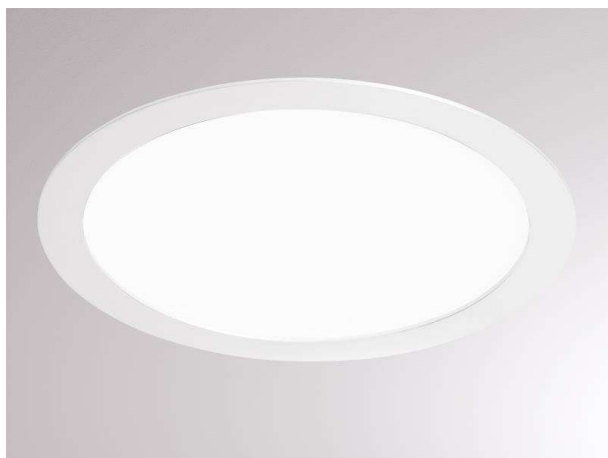


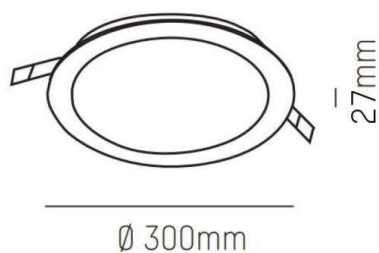
MOON

392-0021880004005

MOON ROUND R RECESSED CEILING LUMINAIRE made of aluminium, white matt, similar to RAL 9003, beam 113°, light output direct, without converter, max. 700mA, IP44



DRAWING



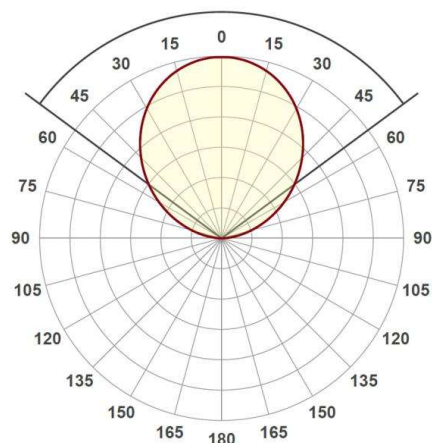
TECHNICAL DETAILS

Bulb type	LED 18W
Luminous flux [lm]	2085
Current sec. [mA]	700
Colour temp. [K]	4000K
CRI	>80
Converter	without converter
Light output	direct
Beam angle [°]	113°
Voltage [V]	30 VDC
Material	aluminium

Height [mm]	27
Diameter [mm]	300
Ceiling cutout [mm]	285
Recess depth [mm]	57
IP protection class	IP44
Voltage class	protection cl. III
Net weight [kg]	1,06

Color lamp	white matt
RAL	9003
EAN-Number	9008905896095
Lifetime [h]	L80 B10 20 000
Energy efficiency cl.	D

LIGHT DISTRIBUTION CURVE



The values are rated values. Power and luminous flux are initially subject to a tolerance of +/- 10%. Colour temperature tolerance: +/- 150 K. The values apply to an ambient temperature of 25°C unless otherwise specified.