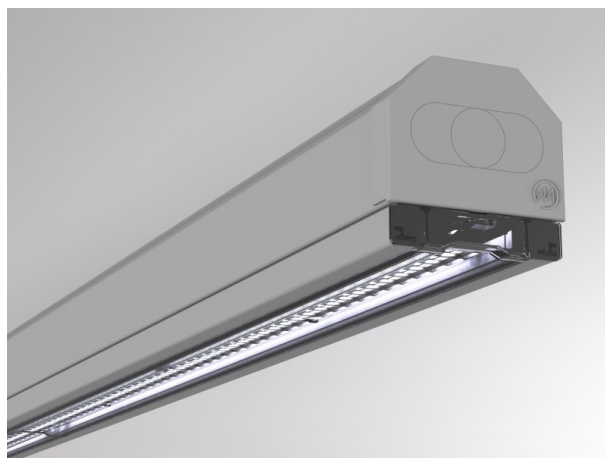


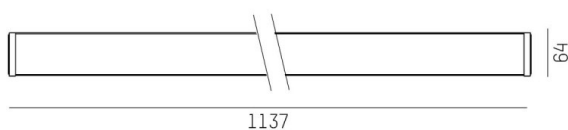
TRAIL

610-125101111704d

TRAIL LIGHT INSERT ASYM MOUNTING RAIL LIGHT INSERT made of aluminium, grey, similar to RAL 9006, linear optics beam asymmetric, light output direct, with converter, max. 250mA, dimmability: DALI, through wiring 7-polig, IP20



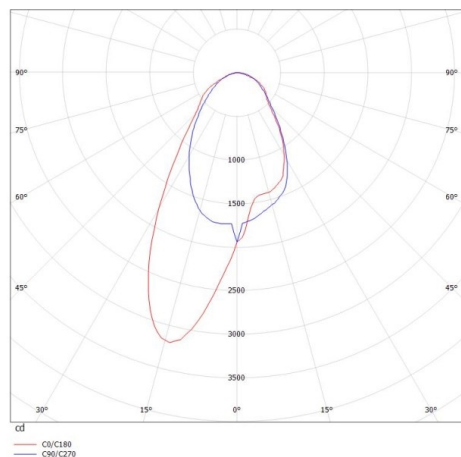
DRAWING



TECHNICAL DETAILS

| | |
|------------------------|----------------------------|
| System perform. [W] | 25 |
| Bulb type | LED |
| Luminous flux [lm] | 3510 |
| Current sec. [mA] | 250 |
| Colour temp. [K] | 3500K |
| CRI | >80 |
| Optics | high quality linear optics |
| Designer | INHOUSE |
| Converter | with converter |
| Light output | direct |
| Beam angle [°] | asymmetrisch |
| Voltage [V] | 220-240V 50/60Hz |
| Through wiring | 7-polig |
| Material | aluminium |
| Length [mm] | 1137 |
| Width [mm] | 64 |
| Height [mm] | 16 |
| IP protection class | IP20 |
| Voltage class | protection cl. I |
| Shock resistance | IK06 |
| Net weight [kg] | 1,23 |
| Colour lamp | grey |
| RAL | 9006 |
| EAN-Number | 9010506588750 |
| Lifetime [h] | L90 B10 100 000 |
| Ambient temperature | -20° bis +50° |
| Energy efficiency cl. | C |
| No. of luminaires B16A | 38 |
| IFS suitable | Yes |

LIGHT DISTRIBUTION CURVE



The values are rated values. Power and luminous flux are initially subject to a tolerance of +/- 10%. Colour temperature tolerance: +/- 150 K. The values apply to an ambient temperature of 25°C unless otherwise specified.