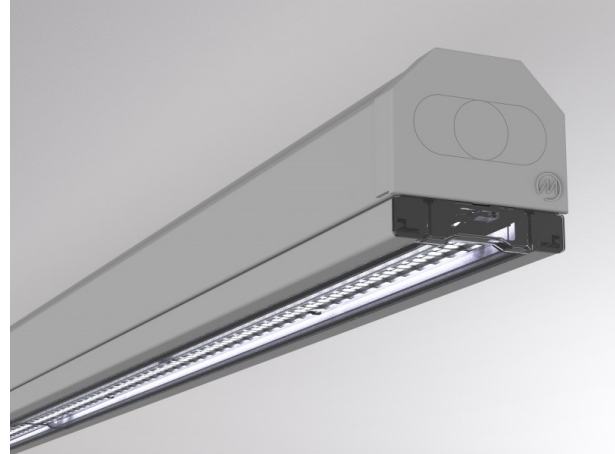


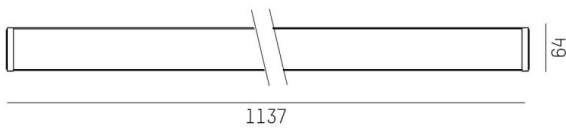
**TRAIL**

**610-1251021317040**

TRAIL LIGHT INSERT WB MOUNTING RAIL LIGHT INSERT made of aluminium, grey, similar to RAL 9006, linear optics beam 90°, light output direct, UGR <28, with converter, max. 400mA, dimmability: not dimmable, through wiring 7-polig, IP20



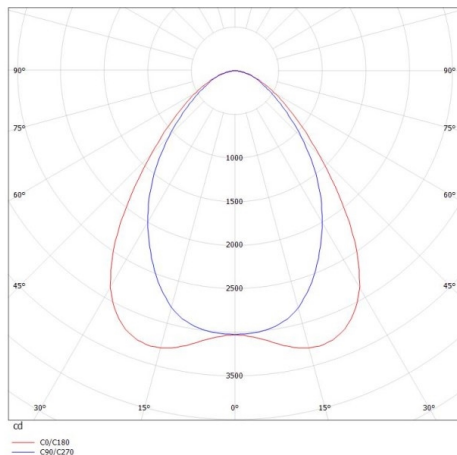
**DRAWING**



**TECHNICAL DETAILS**

System perform. [W]	40
Bulb type	LED
Luminous flux [lm]	6030
Current sec. [mA]	400
Colour temp. [K]	3500K
CRI	>80
UGR	<28
Optics	high quality linear optics
Designer	INHOUSE
Converter	with converter
Dimming	not dimmable
Light output	direct
Beam angle [°]	90°
Voltage [V]	220-240V 50/60Hz
Through wiring	7-polig
Material	aluminium
Length [mm]	1137
Width [mm]	64
Height [mm]	16
IP protection class	IP20
Voltage class	protection cl. I
Shock resistance	IK06
Net weight [kg]	1,17
Colour lamp	grey
RAL	9006
EAN-Number	9010506591644
Lifetime [h]	L90 B10 100 000
Ambient temperature	-20° bis +50°
Energy efficiency cl.	C
No. of luminaires B16A	24
IFS suitable	Yes

**LIGHT DISTRIBUTION CURVE**



The values are rated values. Power and luminous flux are initially subject to a tolerance of +/- 10%. Colour temperature tolerance: +/- 150 K. The values apply to an ambient temperature of 25°C unless otherwise specified.