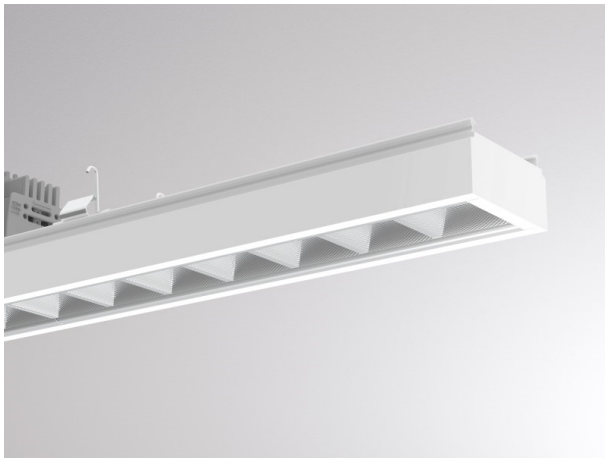


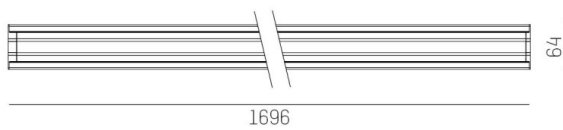
TRAIL

610-1264011b17050

TRAIL LIGHT INSERT OFFICE CHROM MOUNTING RAIL LIGHT INSERT made of aluminium, white, similar to RAL 9016, Lens optics with vacuum deposited synthetic reflector beam 66°, light output direct, UGR <16, with converter, max. 750mA, dimmability: not dimmable, through wiring 7-polig, IP20



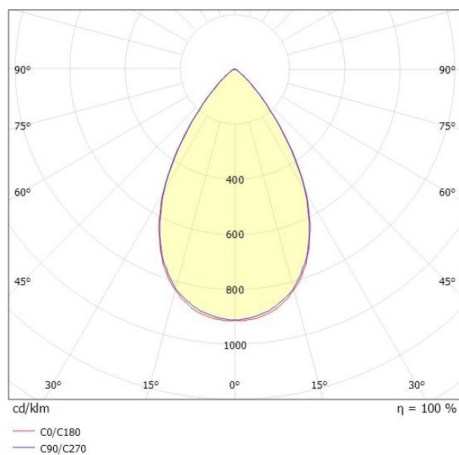
DRAWING



TECHNICAL DETAILS

|                        |   |
|------------------------|---|
| System perform. [W]    | 32  |
| Bulb type              | LED   |
| Luminous flux [lm]     | 4840  |
| Current sec. [mA]      | 750   |
| Colour temp. [K]       | 3500K   |
| CRI                    | >80   |
| UGR                    | <16   |
| Optics                 | Lens optics with vacuum deposited synthetic reflector |
| Designer               | INHOUSE   |
| Converter              | with converter  |
| Dimming                | not dimmable  |
| Light output           | direct  |
| Beam angle [°]         | 66°   |
| Voltage [V]            | 220-240V 50/60Hz                                      |
| Through wiring         | 7-polig   |
| Material               | aluminium   |
| Length [mm]            | 1696  |
| Width [mm]             | 64  |
| Height [mm]            | 35  |
| IP protection class    | IP20  |
| Voltage class          | protection cl. I                                      |
| Shock resistance       | IK06  |
| Net weight [kg]        | 2,19  |
| Colour lamp            | white   |
| RAL                    | 9016  |
| EAN-Number             | 9010506797060   |
| Lifetime [h]           | L90 B10 50 000  |
| Ambient temperature    | -20° bis +50°   |
| Energy efficiency cl.  | D   |
| No. of luminaires B16A | 24  |
| IFS suitable           | Yes   |

LIGHT DISTRIBUTION CURVE



The values are rated values. Power and luminous flux are initially subject to a tolerance of +/- 10%. Colour temperature tolerance: +/- 150 K. The values apply to an ambient temperature of 25°C unless otherwise specified.