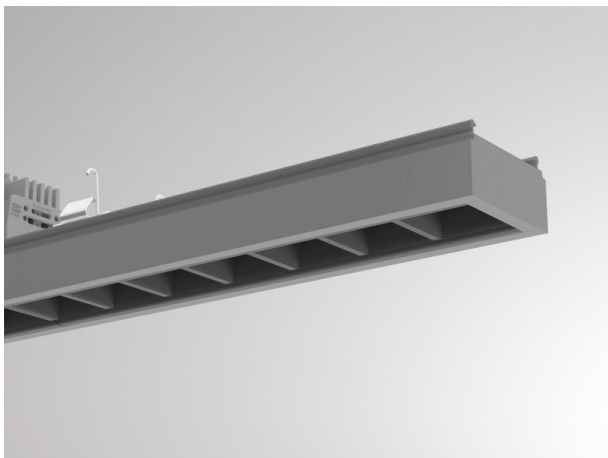


## TRAIL

610-1265011d1304d

TRAIL LIGHT INSERT OFFICE DARK CHROM MOUNTING RAIL LIGHT INSERT made of aluminium, grey, similar to RAL 9006, Lens optics with vacuum deposited Dark reflector beam 66°, light output direct, UGR <16, with converter, max. 1000mA, dimmability: DALI, through wiring IP20



## DRAWING



## TECHNICAL DETAILS

|                        |  |
|------------------------|--|
| System perform. [W]    | 42   |
| Bulb type              | LED  |
| Luminous flux [lm]     | 5460   |
| Current sec. [mA]      | 1000   |
| Colour temp. [K]       | 2700K  |
| CRI                    | >80  |
| UGR                    | <16  |
| Optics                 | Lens optics with vacuum deposited Dark reflector |
| Designer               | INHOUSE  |
| Converter              | with converter                                   |
| Light output           | direct   |
| Beam angle [°]         | 66°  |
| Voltage [V]            | 220-240V 50/60Hz                                 |
| Through wiring         | 7-polig  |
| Material               | aluminium  |
| Length [mm]            | 2255   |
| Width [mm]             | 64   |
| Height [mm]            | 35   |
| IP protection class    | IP20   |
| Voltage class          | protection cl. I                                 |
| Shock resistance       | IK06   |
| Net weight [kg]        | 2,64   |
| Colour lamp            | grey   |
| RAL                    | 9006   |
| EAN-Number             | 9010506797602                                    |
| Lifetime [h]           | L90 B10 50 000                                   |
| Ambient temperature    | -20° bis +50°                                    |
| Energy efficiency cl.  | D  |
| No. of luminaires B16A | 24   |
| IFS suitable           | Yes  |

## LIGHT DISTRIBUTION CURVE



The values are rated values. Power and luminous flux are initially subject to a tolerance of +/- 10%. Colour temperature tolerance: +/- 150 K. The values apply to an ambient temperature of 25°C unless otherwise specified.