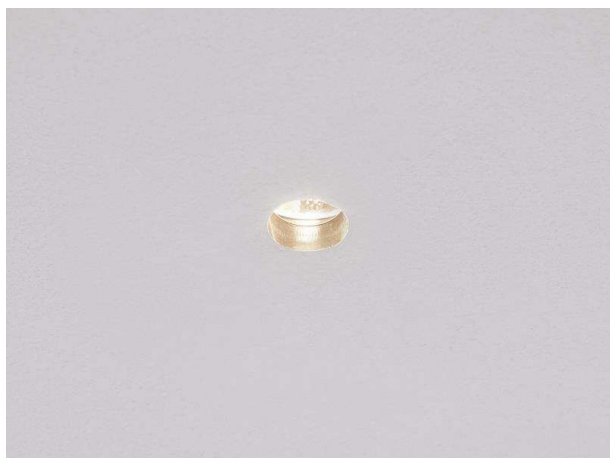


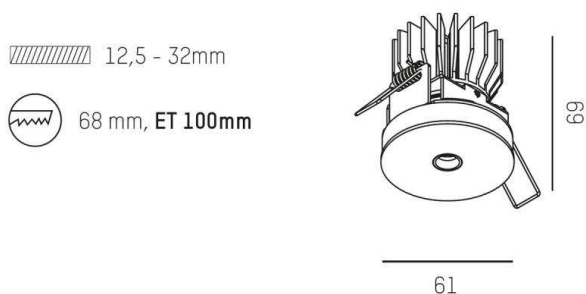
BLIND SPOT

640-00201012300

BLINDSPOT R RECESSED SPOTLIGHT made of aluminium, natural, anti-glare LFO lens due to microfaceted structure beam 30°, light output direct, UGR <16, without converter, max. 700mA, IP20 Please order accessories separately



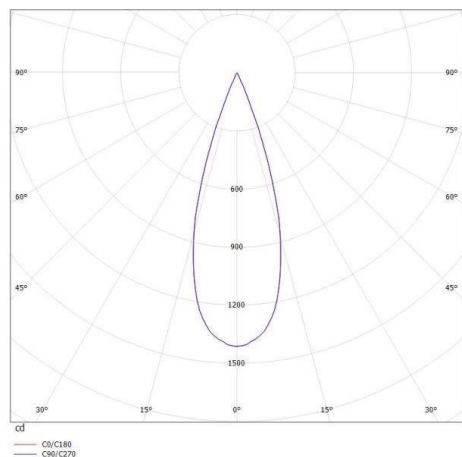
DRAWING



TECHNICAL DETAILS

Bulb type	LED 9W
Luminous flux [lm]	400
Current sec. [mA]	700
Colour temp. [K]	2700K
CRI	>90
UGR	<16
Optics	LFO lens
Designer	Serge Cornelissen
Converter	without converter
Light output	direct
Beam angle [°]	30°
Material	aluminium
Height [mm]	69
Diameter [mm]	61
Ceiling cutout [mm]	68
Ceiling thickness [mm]	12,5 - 32
Recess depth [mm]	100
IP protection class	IP20
Voltage class	protection cl. II
Net weight [kg]	0,26
Color lamp	natural
EAN-Number	9008905740268
Lifetime [h]	L80 B10 50 000

LIGHT DISTRIBUTION CURVE



The values are rated values. Power and luminous flux are initially subject to a tolerance of +/- 10%. Colour temperature tolerance: +/- 150 K. The values apply to an ambient temperature of 25°C unless otherwise specified.