

SYSTEM01.1

697-12000301405m

SYSTEM 01.1 PDI SUSPENSION made of die-cast aluminium, white, similar to RAL 9016, microprismatic PMMA cover for perfect anti-glare light output direct / indirect, UGR <19, with converter, max. 300mA, dimmability: motion swarm, with motion detector, day light control and swarm function, cable transparent, adapter/ceiling base white matt, pendant length 1500mm, IP20 out of the box mode - with activated daylight control and motion detection

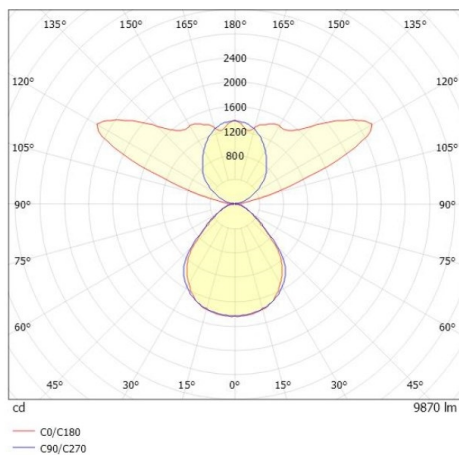


DRAWING

TECHNICAL DETAILS

| | |
|-----------------------------|--|
| System perform. [W] | 63 |
| Bulb type | LED |
| Luminous flux [lm] | 9870 |
| Current sec. [mA] | 300 |
| Colour temp. [K] | 4000K |
| CRI | >80 |
| UGR | <19 |
| Optics | microprismatic cover |
| Designer | INHOUSE |
| Converter | with converter |
| Dimming | motion swarm |
| Motion detector | with motion detector, day light control and swarm function |
| Light output | direct / indirect |
| Voltage [V] | 220-240V AC/DC |
| Material | die-cast aluminium |
| Length [mm] | 1552 |
| Width [mm] | 176 |
| Height [mm] | 37 |
| Pendant length [mm] | 1500 |
| IP protection class | IP20 |
| Voltage class | protection cl. I |
| Net weight [kg] | 7,17 |
| Colour lamp | white |
| RAL | 9016 |
| Colour adapter/ceiling base | white matt |
| Electric wire | transparent |
| EAN-Number | 9010506849059 |
| Lifetime [h] | L80 B10 50 000 |
| Energy efficiency cl. | F |
| No. of luminaires B16A | 21 |

LIGHT DISTRIBUTION CURVE



The values are rated values. Power and luminous flux are initially subject to a tolerance of +/- 10%. Colour temperature tolerance: +/- 150 K. The values apply to an ambient temperature of 25°C unless otherwise specified.