

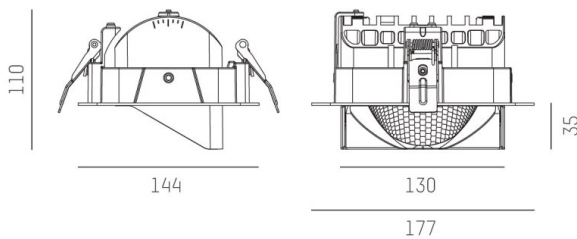
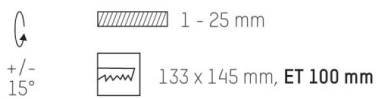
ARTIS MATRIX

704-21103018706v1

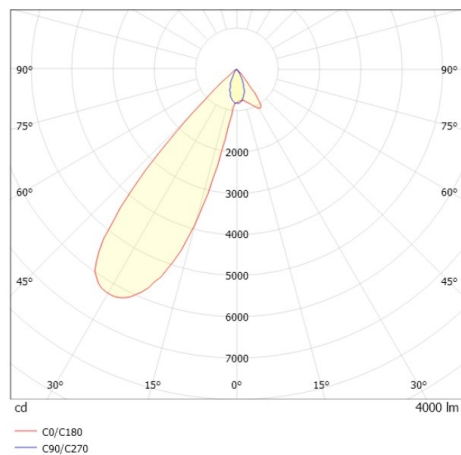
ARTIS 1 MATRIX FLOOR R RECESSED DOWNLIGHT made of aluminium, black, similar to RAL 9005, high-efficiently vacuum deposited synthetic reflector beam asymmetric, light output direct, tilting 30°, without converter, max. 800mA, dimmability: see converter, IP20 with the option of attaching the Lightguider for lighting the 3rd level and 3-level electrically adjustable floor matrix



DRAWING



LIGHT DISTRIBUTION CURVE



TECHNICAL DETAILS

|                        |                                      |
|------------------------|--------------------------------------|
| Bulb type              | LED 40W                              |
| Luminous flux [lm]     | 4000                                 |
| Current sec. [mA]      | 800                                  |
| Colour temp. [K]       | 3500K                                |
| CRI                    | HE>90                                |
| Optics                 | vacuum deposited synthetic reflector |
| Designer               | INHOUSE                              |
| Converter              | without converter                    |
| Dimming                | see converter                        |
| Light output           | direct                               |
| Beam angle [°]         | asymmetrisch                         |
| Material               | aluminium                            |
| Length [mm]            | 177                                  |
| Width [mm]             | 144                                  |
| Height [mm]            | 110/35                               |
| Ceiling cutout [mm]    | 133x145                              |
| Ceiling thickness [mm] | 1-25                                 |
| Recess depth [mm]      | 100                                  |
| IP protection class    | IP20                                 |
| Voltage class          | protection cl. II                    |
| Net weight [kg]        | 0,81                                 |
| Colour lamp            | black                                |
| RAL                    | 9005                                 |
| EAN-Number             | 9010870355149                        |
| Lifetime [h]           | L80 B10 50 000                       |
| Energy efficiency cl.  | D                                    |



The values are rated values. Power and luminous flux are initially subject to a tolerance of +/- 10%. Colour temperature tolerance: +/- 150 K. The values apply to an ambient temperature of 25°C unless otherwise specified.