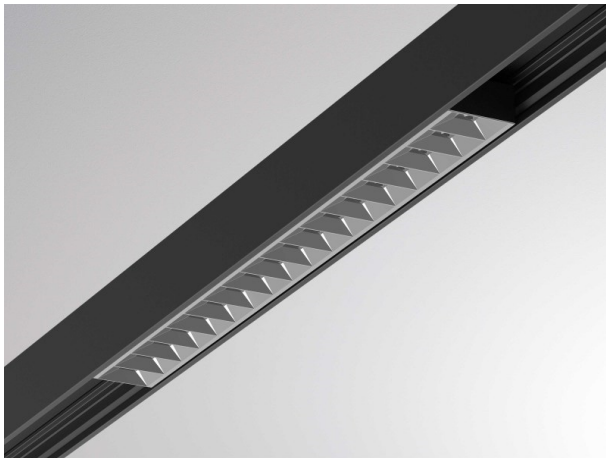


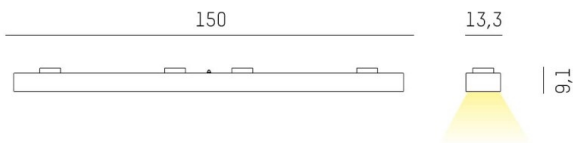
MAGNETICS

708-103012024060

MAGNETICS GRID EINSATZ SYSTEM LIGHT INSERT WITH 24V ADAPTER made of synthetic, dark chrome, linear optics beam 60°, light output direct, without converter, dimmability: not dimmable, IP20



DRAWING



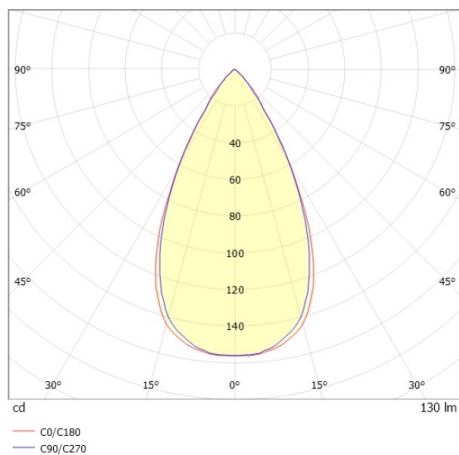
TECHNICAL DETAILS

System perform. [W]	4
Bulb type	LED
Luminous flux [lm]	130
Colour temp. [K]	4000K
CRI	>90
Optics	high quality linear optics
Designer	INHOUSE
Converter	without converter
Dimming	not dimmable
Light output	direct
Beam angle [°]	60°
Voltage [V]	24 VDC
Material	synthetic

Length [mm]	150
Width [mm]	13,3
Height [mm]	9,1
IP protection class	IP20
Voltage class	protection cl. III
Shock resistance	IK03
Net weight [kg]	0,15

Colour lamp	dark chrome
EAN-Number	9010870603899
Lifetime [h]	L80 B10 50 000
Energy efficiency cl.	G

LIGHT DISTRIBUTION CURVE



The values are rated values. Power and luminous flux are initially subject to a tolerance of +/- 10%. Colour temperature tolerance: +/- 150 K. The values apply to an ambient temperature of 25°C unless otherwise specified.