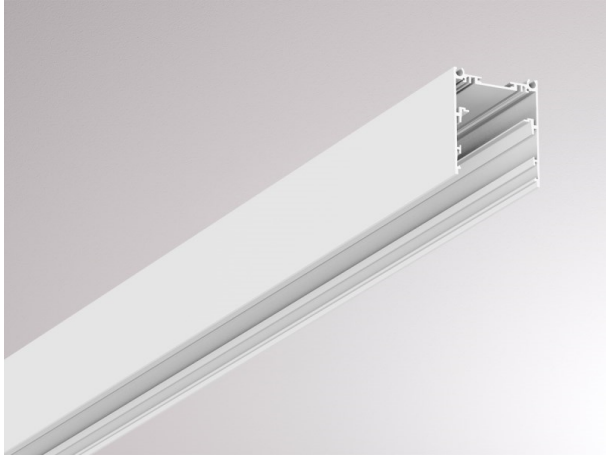


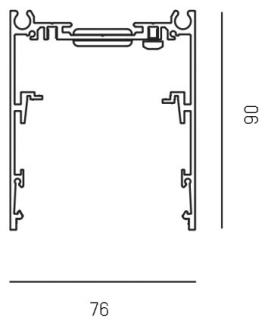
LOG 2.1. SYSTEM

728-195010000500

LOG 2.1 SYSTEM PROFIL SD SURFACE MOUNTED PROFILE made of die-cast aluminium, white, similar to RAL 9016, IP20



DRAWING



TECHNICAL DETAILS

Designer	INHOUSE
Material	die-cast aluminium
Length [mm]	4500
Width [mm]	76
Height [mm]	90
IP protection class	IP20
Net weight [kg]	8,55
Colour lamp	white
RAL	9016
EAN-Number	9010506147308

LIGHT DISTRIBUTION CURVE



The values are rated values. Power and luminous flux are initially subject to a tolerance of +/- 10%. Colour temperature tolerance: +/- 150 K. The values apply to an ambient temperature of 25°C unless otherwise specified.