

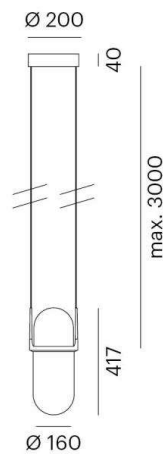
PILLE

737-10013pgd

PILLE PDI SUSPENSION made of hand-blown glass, black, similar to RAL 9005, rose grey, light output direct / indirect, with converter, max. 700mA, dimmability: DALI, cable black, adapter/ceiling base black, pendant length 3000mm, IP20



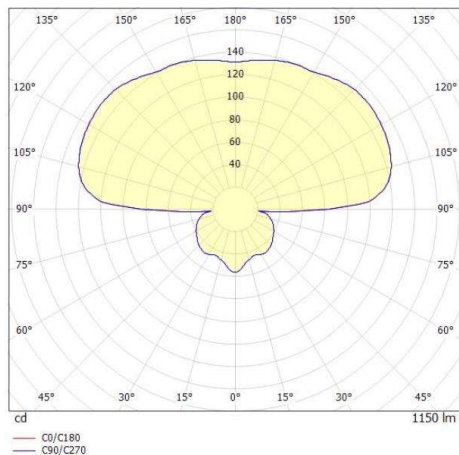
DRAWING



TECHNICAL DETAILS

System perform. [W]	27
Bulb type	LED
Luminous flux [lm]	1150
Current sec. [mA]	700
Colour temp. [K]	2700K
CRI	>90
Converter	with converter
Light output	direct / indirect
Voltage [V]	220-240V 50/60Hz
Material	hand-blown glass
Height [mm]	417
Pendant length [mm]	3000
Diameter [mm]	160
IP protection class	IP20
Voltage class	protection cl. I
Net weight [kg]	13,98
Colour lamp	black
RAL	9005
Colour of glass/shade	rose grey
Colour adapter/ceiling base	black
Electric wire	black
EAN-Number	9010506450477
Lifetime [h]	50 000 L80 B10
Energy efficiency cl.	E
No. of luminaires B16A	50

LIGHT DISTRIBUTION CURVE



The values are rated values. Power and luminous flux are initially subject to a tolerance of +/- 10%. Colour temperature tolerance: +/- 150 K. The values apply to an ambient temperature of 25°C unless otherwise specified.