

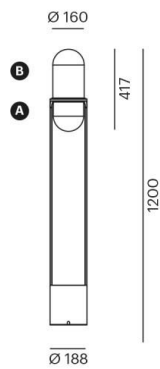
PILLE

737-60013ghtv2

PILLE F FLOOR LAMP made of aluminium, black, similar to RAL 9005, shade made of hand-blown glass grey champagne, light output direct / indirect, with converter, max. 700mA, dimmability: Push Dim, cable black, fabric, IP20 Wooden base with visible grain, black painted,



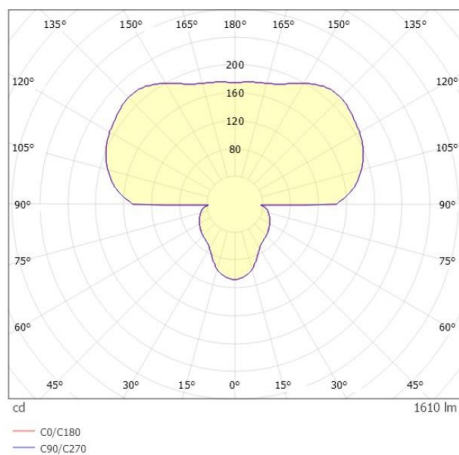
DRAWING



TECHNICAL DETAILS

System perform. [W]	27
Bulb type	LED
Luminous flux [lm]	1610
Current sec. [mA]	700
Colour temp. [K]	2700K
CRI	PREMIUM>90
Optics	hand-blown glass
Converter	with converter
Light output	direct / indirect
Voltage [V]	220-240V 50/60Hz
Material	aluminium
Width [mm]	188
Height [mm]	1200
Diameter [mm]	188
IP protection class	IP20
Voltage class	protection cl. I
Net weight [kg]	6,53
Colour lamp	black
RAL	9005
Colour of glass/shade	grey champagne
Electric wire	black, fabric
EAN-Number	9010979106598
Lifetime [h]	L80 B10 50 000
Energy efficiency cl.	E
No. of luminaires B16A	50

LIGHT DISTRIBUTION CURVE



energy label



The values are rated values. Power and luminous flux are initially subject to a tolerance of +/- 10%. Colour temperature tolerance: +/- 150 K. The values apply to an ambient temperature of 25°C unless otherwise specified.