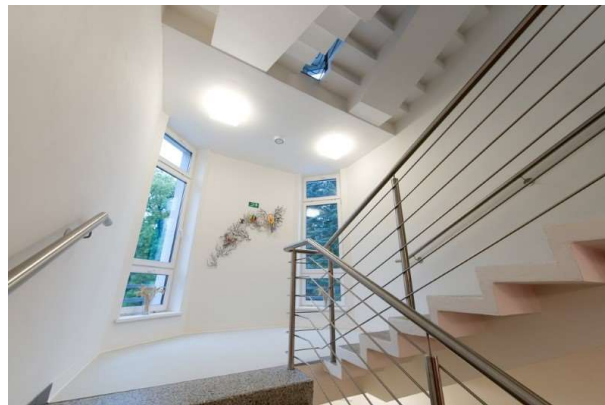


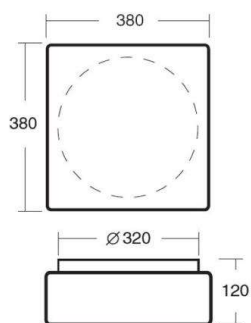
LINA

789-42310

LINA 6 WALL / CEILING LUMINAIRE made of steel sheet, white, triplex opal glass satined white, beam without lamp, light output direct, dimmable not dimmable, IP43



DRAWING



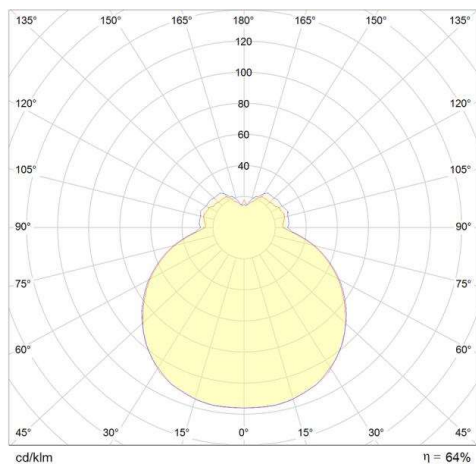
TECHNICAL DETAILS

Bulb type	AGL A60 ECO 57W
No. of bulb holders	2x
Socket	E27
Optics	triplex opal glass
Dimming	nicht dimmbar
Light output	direct
Beam angle [°]	exkl. LM
Voltage [V]	220-240V 50/60Hz
Material	steel sheet

Length [mm]	380
Width [mm]	380
Height [mm]	120
IP protection class	IP43
Voltage class	protection cl. II
Net weight [kg]	4,10

Color lamp	white
Glass color	satined white
EAN-Number	8591728423100
Lifetime [h]	50 000

LIGHT DISTRIBUTION CURVE



The values are rated values. Power and luminous flux are initially subject to a tolerance of +/- 10%. Colour temperature tolerance: +/- 150 K. The values apply to an ambient temperature of 25°C unless otherwise specified.