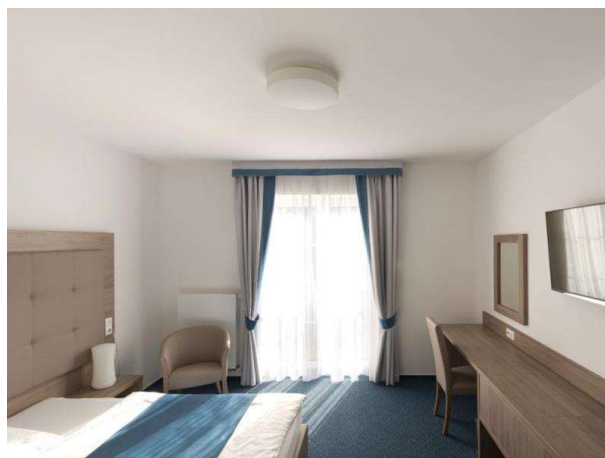


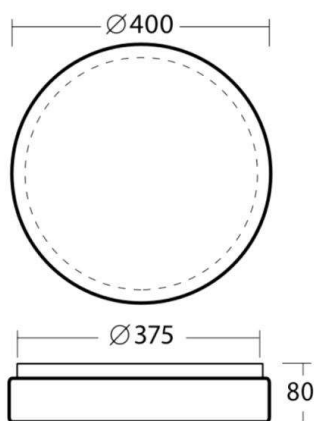
DELIA

789-56116

DELIA 2 WALL / CEILING LUMINAIRE made of steel sheet, white, polycarbonate cover satined, light output direct, with motion detector, IP44 without lamp



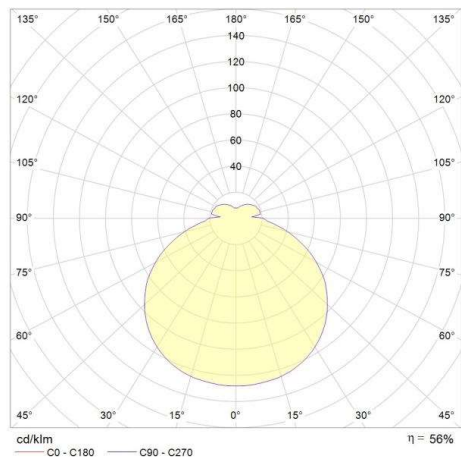
DRAWING



TECHNICAL DETAILS

Bulb type	AGL A60 ECO 30W
No. of bulb holders	2x
Socket	E27
Optics	polycarbonate cover with motion detector
Motion detector	direct
Light output	220-240V 50/60Hz
Voltage [V]	steel sheet
Material	
Height [mm]	80
Diameter [mm]	400
IP protection class	IP44
Voltage class	protection cl. I
Shock resistance	IK10
Net weight [kg]	1,50
Color lamp	white
Glass color	satined
EAN-Number	8591728561161
Lifetime [h]	50 000

LIGHT DISTRIBUTION CURVE



The values are rated values. Power and luminous flux are initially subject to a tolerance of +/- 10%. Colour temperature tolerance: +/- 150 K. The values apply to an ambient temperature of 25°C unless otherwise specified.