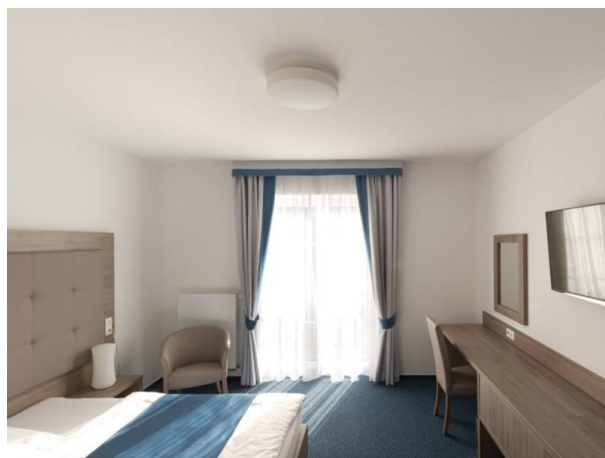


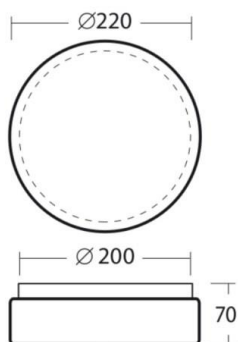
OSMONT

789-56282

DELIA WALL / CEILING LUMINAIRE made of steel sheet, white, polycarbonate cover white, light output direct, with converter, dimmability: not dimmable, without motion detector, IP54



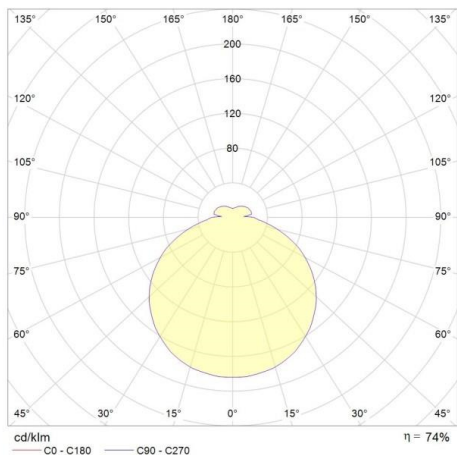
DRAWING



TECHNICAL DETAILS

System perform. [W]	11
Bulb type	LED
Luminous flux [lm]	950
Colour temp. [K]	3000K
CRI	>80
Optics	polycarbonate cover
Converter	with converter
Dimming	not dimmable
Motion detector	without motion detector
Light output	direct
Voltage [V]	220-240V 50/60Hz
Material	steel sheet
Height [mm]	70
Diameter [mm]	220
IP protection class	IP54
Voltage class	protection cl. I
Shock resistance	IK10
Net weight [kg]	0,65
Colour lamp	white
Colour of glass/shade	white
EAN-Number	8591728562823
Lifetime [h]	L80 B10 50 000
Energy efficiency cl.	D
No. of luminaires B16A	78

LIGHT DISTRIBUTION CURVE



The values are rated values. Power and luminous flux are initially subject to a tolerance of +/- 10%. Colour temperature tolerance: +/- 150 K. The values apply to an ambient temperature of 25°C unless otherwise specified.