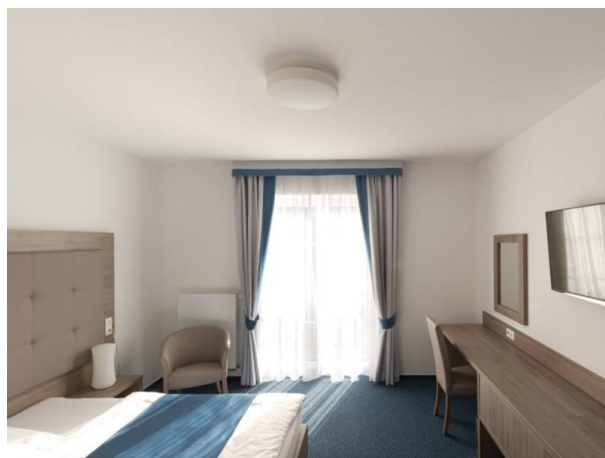


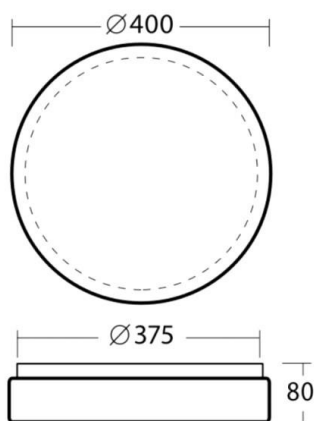
DELIA

789-56300

DELIA WALL / CEILING LUMINAIRE made of steel sheet, white, polycarbonate cover white, light output direct, with converter, dimmability: not dimmable, without motion detector, IP54



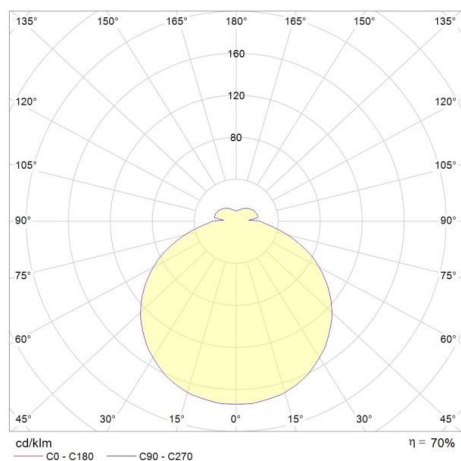
DRAWING



TECHNICAL DETAILS

| | |
|------------------------|-------------------------|
| System perform. [W] | 24 |
| Bulb type | LED |
| Luminous flux [lm] | 2630 |
| Colour temp. [K] | 3000K |
| CRI | >80 |
| Optics | polycarbonate cover |
| Converter | with converter |
| Dimming | not dimmable |
| Motion detector | without motion detector |
| Light output | direct |
| Voltage [V] | 220-240V 50/60Hz |
| Material | steel sheet |
| Height [mm] | 80 |
| Diameter [mm] | 400 |
| IP protection class | IP54 |
| Voltage class | protection cl. I |
| Shock resistance | IK10 |
| Net weight [kg] | 1,62 |
| Colour lamp | white |
| Colour of glass/shade | white |
| EAN-Number | 8591728563004 |
| Lifetime [h] | 50 000 |
| Energy efficiency cl. | D |
| No. of luminaires B16A | 52 |

LIGHT DISTRIBUTION CURVE



The values are rated values. Power and luminous flux are initially subject to a tolerance of +/- 10%. Colour temperature tolerance: +/- 150 K. The values apply to an ambient temperature of 25°C unless otherwise specified.