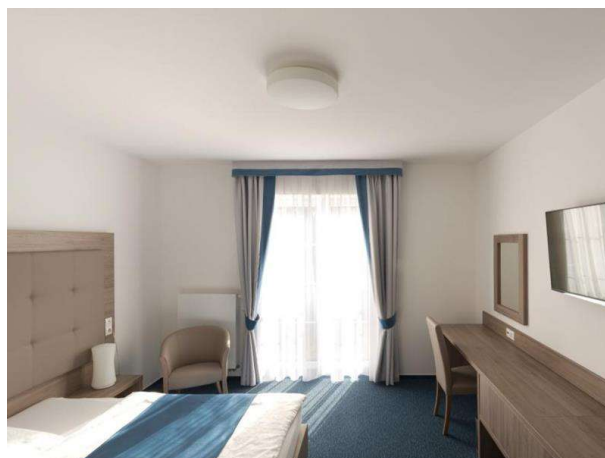


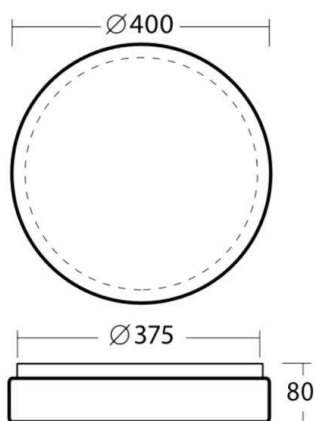
DELIA

789-56301

DELIA 2 WALL / CEILING LUMINAIRE made of steel sheet, white, polycarbonate cover satined, light output direct, with converter, dimmability: not dimmable, with motion detector, IP54



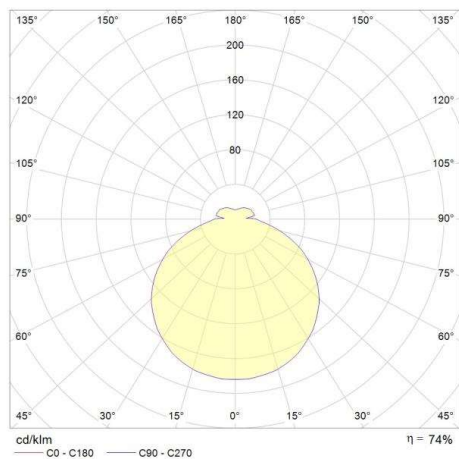
DRAWING



TECHNICAL DETAILS

System perform. [W]	28
Bulb type	LED
Luminous flux [lm]	2580
Colour temp. [K]	3000K
CRI	>80
Optics	polycarbonate cover
Converter	with converter
Dimming	not dimmable
Motion detector	with motion detector
Light output	direct
Voltage [V]	220-240V 50/60Hz
Material	steel sheet
Height [mm]	80
Diameter [mm]	400
IP protection class	IP54
Voltage class	protection cl. I
Shock resistance	IK10
Net weight [kg]	1,80
Color lamp	white
Glass color	satined
EAN-Number	8591728563011
Lifetime [h]	50 000
No. of luminaires B16A	52

LIGHT DISTRIBUTION CURVE



The values are rated values. Power and luminous flux are initially subject to a tolerance of +/- 10%. Colour temperature tolerance: +/- 150 K. The values apply to an ambient temperature of 25°C unless otherwise specified.