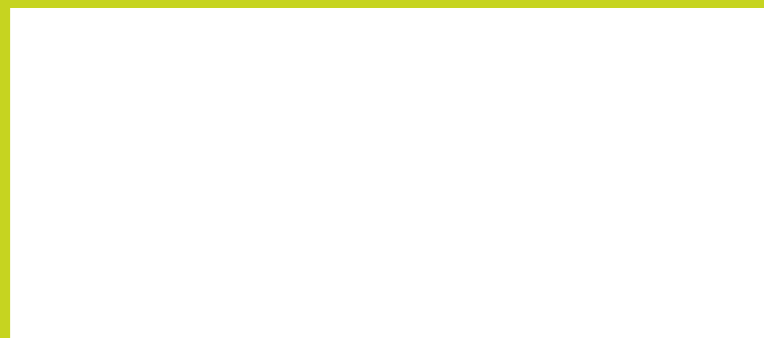


# STRIPES 4



HEADQUARTERS WELS  
Office & Showroom  
4600 Wels, Austria  
Europastrasse 45  
T: +43 7242 698-0  
F: +43 7242 60376  
M: office@moltoluce.com

[www.moltoluce.com](http://www.moltoluce.com)



V\_0\_001

MOLTO LUCE®

**PREMIUM LED STRIPES**



PREMIUM STRIPES 08-09

**BASIC LED STRIPES INDOOR**



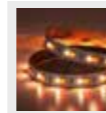
BASIC WHITE STRIPES 12-15



LED STRIPES DIM2WARM 16



LED STRIPES TUNABLE W 17



BASIC RGB/W STRIPES 20-21

**BASIC LED STRIPES OUTDOOR**



BASIC WHITE STRIPES IP67 24



LED STRIPES TUNABLE W 25



BASIC 48V STRIPES IP67 26-27



BASIC RGB/W STRIPES IP67 28-29

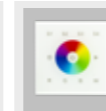
**PROFILES AND ACCESSORIES**



PROFILES 30-39



CONVERTER 40-43



CONTROLLER 41-43

**LEGEND**

**w** white

**s** silver

**w0** opal white

**s** black

**e** stainless steel

**s0** opal black

**ae** aluminium anodized

**an** aluminium nature

**k** transparent



Our LED stripes are now ready to ship by the roll within 24h!



Order now in the webshop:



**Attention: Our 24h READY TO DELIVER offer is valid for the EU area!**



Project: Kurhotel Marienkron, Austria  
Photo: Fotografie Gabriel Buechelmeier  
Product: PREMIUM LED STRIPE



Project: Karriere.at, Linz, Austria  
Photo: Molto Luce  
Product: BASIC LED RGB STRIPE



Project: Truckcenter Katzinger, Altenfelden, Austria  
Photo: Leibez Interieur Design Photo: Stöbich  
Product: PREMIUM LED STRIPE





Project: Pfeffermühle, Austria  
Photo: Tischlerei Kotrasch  
Product: PREMIUM LED STRIPE



**PREMIUM LED STRIPES IP65**



Power: 5; 9; 18 oder 28W/M  
 Light colours: 2500; 2700; 3000 or 4000K  
 MacAdam 3Step Binning  
 CRI>90

Info: page 08-09

**BASIC LED STRIPES IP20**



Power: 4.8; 9.6 oder 14.4W/M  
 Light colours: 3000 or 4000K  
 MacAdam 3Step Binning  
 CRI>80

Info: page 12-15

**LED STRIPES DIM2WARM IP20**



Power: 14.4W/M  
 Light colours: 3000-2200K or 2700-2200K  
 MacAdam 5Step Binning  
 CRI>80

Info: page 16

**BASIC LED STRIPES IP67**



Power: 4.8 oder 14.4W/M  
 Light colours: 3000 or 4000K  
 MacAdam 3Step Binning  
 CRI>80

Info: page 24

**LED STRIPES TUNABLE WHITE IP67**



Power: 14.4W/M  
 Light colours: 2700 - 6500K  
 MacAdam 5Step Binning

Info: page 25

**BASIC 48V LED STRIPES IP67**



Power: 4.8W/M  
 Light colours: 3000 or 4000K  
 MacAdam 5Step Binning  
 CRI>80

Info: page 26-27

**LED STRIPES TUNABLE WHITE IP20**



Power: 14.4W/M  
 Light colours: 2700 - 6500K  
 MacAdam 5Step Binning

Info: page 17

**BASIC LED STRIPES RGB-W IP20**



Power: 18.1W/M  
 Light colours: RGB / W3000K  
 MacAdam 3Step Binning

Info: page 20

**BASIC LED STRIPES RGB-W IP67**



Power: 18.1W/M  
 Light colours: RGB / W3000K  
 MacAdam 3Step Binning

Info: page 28-29



## PREMIUM LED STRIPES IP65



## PREMIUM LED STRIPE 5W/M 10M ROLL OR SOLD BY METER

| INFO   | POWER    | V DC | LUMEN / M | CRI | LED   | L          | W | H   | PACKAGE   | CODE                      |
|--|----------|------|-----------|-----|-------|------------|---|-----|-----------|---------------------------|
| Flexible PREMIUM LED stripe, IP65, by plasma coating, sold by meter, 120 LEDs/m, 5W per meter, separable each 5 cm, fixing with double-sided adhesive tape 3M, without converter, in order to guarantee a long service life and perfect functioning of the LED stripes, they must be mounted on heat conducting material! Price quotation without cut to size! | LED 5W/m | 24   | 440       | >90 | 2500K | 10m        | 5 | 1,4 | Roll      | <b>283-240565uuww</b>     |
|  | LED 5W/m | 24   | 470       | >90 | 2700K | 10m        | 5 | 1,4 | Roll      | <b>283-240565uww</b>      |
|  | LED 5W/m | 24   | 520       | >90 | 3000K | 10m        | 5 | 1,4 | Roll      | <b>283-240565ww</b>       |
|  | LED 5W/m | 24   | 580       | >90 | 4000K | 10m        | 5 | 1,4 | Roll      | <b>283-240565nw</b>       |
| Please calculate per cut 1x <b>283-konf</b> additionally.  | LED 5W/m | 24   | 440       | >90 | 2500K | your order | 5 | 1,4 | per meter | <b>283-240565uuwwkonf</b> |
|  | LED 5W/m | 24   | 470       | >90 | 2700K | your order | 5 | 1,4 | per meter | <b>283-240565uwwkonf</b>  |
|  | LED 5W/m | 24   | 520       | >90 | 3000K | your order | 5 | 1,4 | per meter | <b>283-240565wwkonf</b>   |
|  | LED 5W/m | 24   | 580       | >90 | 4000K | your order | 5 | 1,4 | per meter | <b>283-240565nwwkonf</b>  |
| <b>ATTENTION:</b> Maximum length per feed point 5m   |          |      |           |     |       |            |   |     |           |                           |

## PREMIUM LED STRIPE 9W/M 30M ROLL OR SOLD BY METER

| INFO   | POWER    | V DC | LUMEN / M | CRI | LED   | L          | W | H   | PACKAGE   | CODE                      |
|--|----------|------|-----------|-----|-------|------------|---|-----|-----------|---------------------------|
| Flexible PREMIUM LED stripe, IP65, by plasma coating, sold by meter, 120 LEDs/m, 9W / meter, separable each 5 cm, fixing with double-sided adhesive tape 3M, without converter, in order to guarantee a long service life and perfect functioning of the LED stripes, they must be mounted on heat conducting material! Price quotation without cut to size! | LED 9W/m | 24   | 950       | >90 | 2500K | 30m        | 8 | 1,4 | Roll      | <b>283-240965uuww</b>     |
|  | LED 9W/m | 24   | 1054      | >90 | 2700K | 30m        | 8 | 1,4 | Roll      | <b>283-240965uww</b>      |
|  | LED 9W/m | 24   | 1058      | >90 | 3000K | 30m        | 8 | 1,4 | Roll      | <b>283-240965ww</b>       |
|  | LED 9W/m | 24   | 1134      | >90 | 4000K | 30m        | 8 | 1,4 | Roll      | <b>283-240965nw</b>       |
| Please calculate per cut 1x <b>283-konf</b> additionally.  | LED 9W/m | 24   | 950       | >90 | 2500K | your order | 8 | 1,4 | per meter | <b>283-240965uuwwkonf</b> |
|  | LED 9W/m | 24   | 1054      | >90 | 2700K | your order | 8 | 1,4 | per meter | <b>283-240965uwwkonf</b>  |
|  | LED 9W/m | 24   | 1058      | >90 | 3000K | your order | 8 | 1,4 | per meter | <b>283-240965wwkonf</b>   |
|  | LED 9W/m | 24   | 1134      | >90 | 4000K | your order | 8 | 1,4 | per meter | <b>283-240965nwwkonf</b>  |
| <b>ATTENTION:</b> Maximum length per feed point 10m  |          |      |           |     |       |            |   |     |           |                           |

## PREMIUM LED STRIPE 18W/M 30M ROLL OR SOLD BY METER

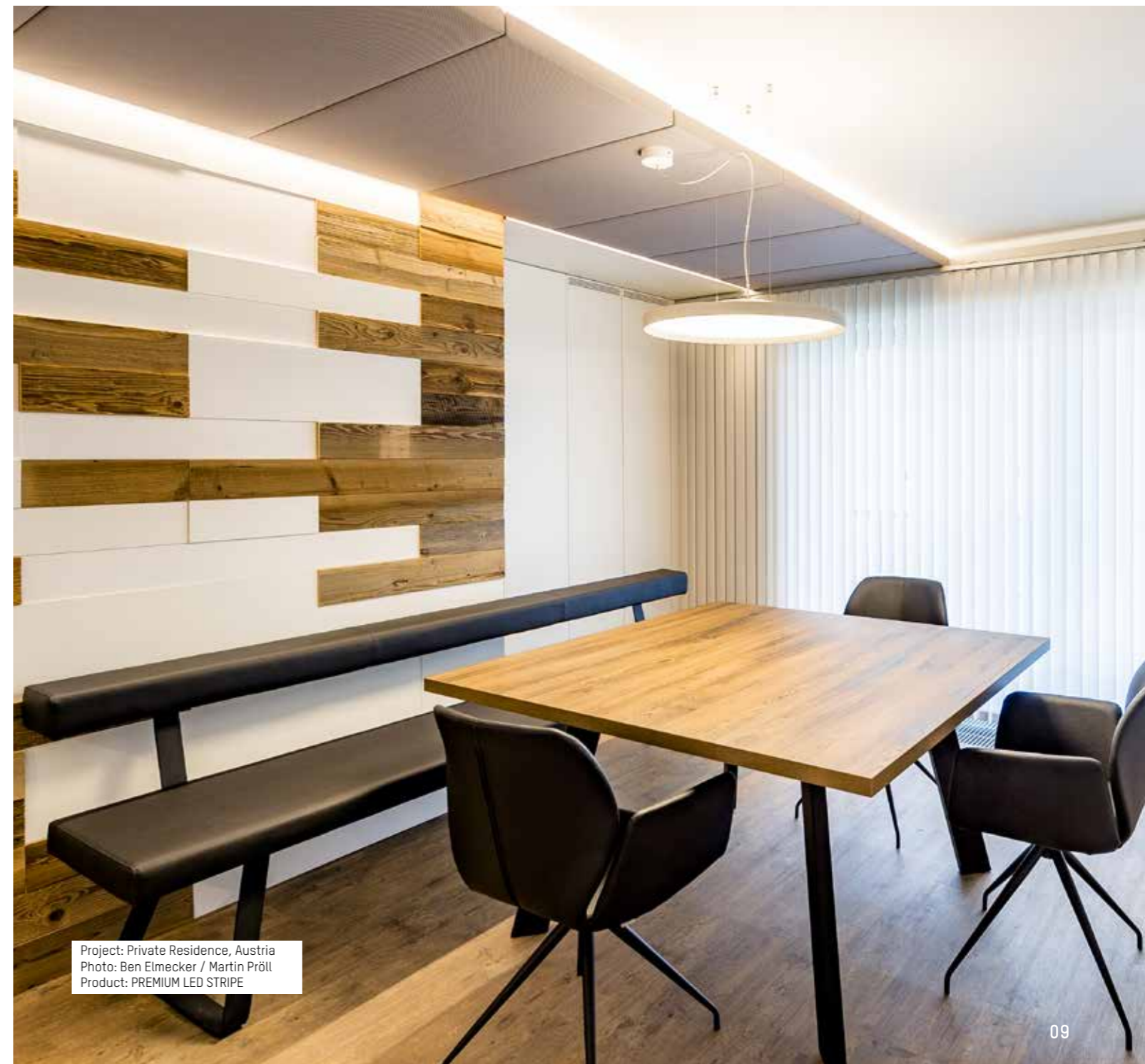
| INFO  | POWER     | V DC | LUMEN / M | CRI | LED   | L          | W | H   | PACKAGE   | CODE                      |
|---|-----------|------|-----------|-----|-------|------------|---|-----|-----------|---------------------------|
| Flexible PREMIUM LED stripe, IP65, by plasma coating, sold by meter, 120 LEDs/m, 18W / meter, separable each 5 cm, fixing with double-sided adhesive tape 3M, without converter, in order to guarantee a long service life and perfect functioning of the LED stripes, they must be mounted on heat conducting material! Price quotation without cut to size! | LED 18W/m | 24   | 1755      | >90 | 2500K | 30m        | 8 | 1,4 | Roll      | <b>283-241865uuww</b>     |
|   | LED 18W/m | 24   | 1934      | >90 | 2700K | 30m        | 8 | 1,4 | Roll      | <b>283-241865uww</b>      |
|   | LED 18W/m | 24   | 1980      | >90 | 3000K | 30m        | 8 | 1,4 | Roll      | <b>283-241865ww</b>       |
|   | LED 18W/m | 24   | 2148      | >90 | 4000K | 30m        | 8 | 1,4 | Roll      | <b>283-241865nw</b>       |
| Please calculate per cut 1x <b>283-konf</b> additionally.   | LED 18W/m | 24   | 1755      | >90 | 2500K | your order | 8 | 1,4 | per meter | <b>283-241865uuwwkonf</b> |
|   | LED 18W/m | 24   | 1934      | >90 | 2700K | your order | 8 | 1,4 | per meter | <b>283-241865uwwkonf</b>  |
|   | LED 18W/m | 24   | 1980      | >90 | 3000K | your order | 8 | 1,4 | per meter | <b>283-241865wwkonf</b>   |
|   | LED 18W/m | 24   | 2148      | >90 | 4000K | your order | 8 | 1,4 | per meter | <b>283-241865nwwkonf</b>  |
| <b>ATTENTION:</b> Maximum length per feed point 8m  |           |      |           |     |       |            |   |     |           |                           |

## PREMIUM LED STRIPE 28W/M 30M ROLL OR SOLD BY METER

| INFO  | POWER     | V DC | LUMEN / M | CRI | LED   | L          | W | H   | PACKAGE   | CODE                      |
|---|-----------|------|-----------|-----|-------|------------|---|-----|-----------|---------------------------|
| Flexible PREMIUM LED stripe, IP65, by plasma coating, sold by meter, 120 LEDs/m, 28W / meter, separable each 5 cm, fixing with double-sided adhesive tape 3M, without converter, in order to guarantee a long service life and perfect functioning of the LED stripes, they must be mounted on heat conducting material! Price quotation without cut to size! | LED 28W/m | 24   | 2500      | >90 | 2500K | 30m        | 8 | 1,4 | Roll      | <b>283-242865uuww</b>     |
|   | LED 28W/m | 24   | 2890      | >90 | 2700K | 30m        | 8 | 1,4 | Roll      | <b>283-242865uww</b>      |
|   | LED 28W/m | 24   | 2922      | >90 | 3000K | 30m        | 8 | 1,4 | Roll      | <b>283-242865ww</b>       |
|   | LED 28W/m | 24   | 3191      | >90 | 4000K | 30m        | 8 | 1,4 | Roll      | <b>283-242865nw</b>       |
| Please calculate per cut 1x <b>283-konf</b> additionally.   | LED 28W/m | 24   | 2500      | >90 | 2500K | your order | 8 | 1,4 | per meter | <b>283-242865uuwwkonf</b> |
|   | LED 28W/m | 24   | 2890      | >90 | 2700K | your order | 8 | 1,4 | per meter | <b>283-242865uwwkonf</b>  |
|   | LED 28W/m | 24   | 2922      | >90 | 3000K | your order | 8 | 1,4 | per meter | <b>283-242865wwkonf</b>   |
|   | LED 28W/m | 24   | 3191      | >90 | 4000K | your order | 8 | 1,4 | per meter | <b>283-242865nwwkonf</b>  |
| <b>ATTENTION:</b> Maximum length per feed point 4m  |           |      |           |     |       |            |   |     |           |                           |

## CONFIGURATION PREMIUM LED STRIPES

| INFO   | CODE            |
|--|-----------------|
| LED STRIPE IP65 PER CUT CONTAINS:<br>Cut to size, 50cm soldered connection cable, cut seal, system test, ESD packing | <b>283-konf</b> |



Project: Private Residence, Austria  
Photo: Ben Elmecker / Martin Pröll  
Product: PREMIUM LED STRIPE





Project: Private Residence, Austria  
Photo: Gabriel Büchelmeier  
Product: BASIC LED STRIPE



## BASIC LED STRIPES IP20



### BASIC LED STRIPE 4,8W/M ROLL 5 M OR SOLD BY METER

| INFO   | POWER      | V DC | LUMEN / M | CRI | LED   | L          | W | H | PACKAGE   | CODE              |
|--|------------|------|-----------|-----|-------|------------|---|---|-----------|-------------------|
| Flexible BASIC LED stripe, roll 5000mm, 300 SMD3528 LEDs, 60 LEDs / meter, 4,8W / meter, separable each 6 LEDs (ca. 10cm), fixing with double-sided adhesive tape 3M, without converter,<br><br><b>ATTENTION:</b> No resistance to chemical substances or vapours (e.g. chlorine and similar). In order to guarantee a long service life and perfect functioning of the LED stripes, they must be mounted on heat conducting material! | LED 4,8W/m | 24   | 440       | >80 | 3000K | 5m         | 8 | 3 | Roll      | 746-1242420ww     |
|  | LED 4,8W/m | 24   | 473       | >80 | 4000K | 5m         | 8 | 3 | Roll      | 746-1242420nw     |
|  | LED 4,8W/m | 24   | 440       | >80 | 3000K | your order | 8 | 3 | per meter | 746-1242420wwkonf |
|  | LED 4,8W/m | 24   | 473       | >80 | 4000K | your order | 8 | 3 | per meter | 746-1242420nwkonf |

Please calculate per cut 1x 746-konfip20 additionally.

**ATTENTION:** Maximum length per feed point 10m

#### ACCESSOIRES



| PRODUCT                                  | CODE         |
|--|--------------|
| FAST POWER FEED incl. 200mm cable        | 746-fc1220w  |
| FAST CONNECTOR                           | 746-lc1220w  |
| LINEAR CONNECTOR FLEX. incl. 100mm cable | 746-lcf1220w |

### BASIC LED STRIPE 9,6W/M ROLL 5 M OR SOLD BY METER

| INFO   | POWER      | V DC | LUMEN / M | CRI | LED   | L          | W | H | PACKAGE   | CODE              |
|--|------------|------|-----------|-----|-------|------------|---|---|-----------|-------------------|
| Flexible BASIC LED stripe, roll 5000mm, 300 SMD3528 LEDs, 60 LEDs / meter, 9,6W / meter, separable each 6 LEDs (ca. 10cm), fixing with double-sided adhesive tape 3M, without converter,<br><br><b>ATTENTION:</b> No resistance to chemical substances or vapours (e.g. chlorine and similar). In order to guarantee a long service life and perfect functioning of the LED stripes, they must be mounted on heat conducting material! | LED 9,6W/m | 24   | 983       | >80 | 3000K | 5m         | 8 | 3 | Roll      | 746-1244820ww     |
|  | LED 9,6W/m | 24   | 1006      | >80 | 4000K | 5m         | 8 | 3 | Roll      | 746-1244820nw     |
|  | LED 9,6W/m | 24   | 983       | >80 | 3000K | your order | 8 | 3 | per meter | 746-1244820wwkonf |
|  | LED 9,6W/m | 24   | 1006      | >80 | 4000K | your order | 8 | 3 | per meter | 746-1244820nwkonf |

Please calculate per cut 1x 746-konfip20 additionally.

**ATTENTION:** Maximum length per feed point 7m

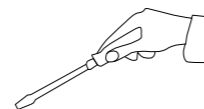
#### ACCESSOIRES



| PRODUCT                                  | CODE         |
|--|--------------|
| FAST POWER FEED incl. 200mm cable        | 746-fc1220w  |
| FAST CONNECTOR                           | 746-lc1220w  |
| LINEAR CONNECTOR FLEX. incl. 100mm cable | 746-lcf1220w |

### CONFIGURATION BASIC LED STRIPES IP20

| INFO   | CODE         |
|--|--------------|
| LED stripe IP20 per cutting includes:<br>Cutting, 50cm connecting cable soldered, system test, packaging | 746-konfip20 |



Project: Hilton Hotel, TECA Aberdeen, Schottland  
Photo: Paul Zanre  
Product: BASIC LED STRIPE



Project: Private Residence, Austria  
Photo: Molto Luce  
Product: BASIC LED STRIPE



Project: Peffermühle, Austria  
Photo: Tischlerei Kotrasch  
Product: BASIC LED STRIPE



## BASIC LED STRIPES IP20



### BASIC LED STRIPE 14,4W/M ROLL 5 M OR SOLD BY M

| INFO  | POWER       | V DC | LUMEN / M | CRI | LED   | L  | W  | H | PACKAGE | CODE          |
|---|-------------|------|-----------|-----|-------|----|----|---|---------|---------------|
| Flexible BASIC LED stripe, roll 5000mm, 300 SMD5060 LEDs, 60 LEDs / meter, 14,4W / meter, separable each 6 LEDs (ca. 10cm), fixing with double-sided adhesive tape 3M, without converter, | LED 14,4W/m | 24   | 1395      | >80 | 3000K | 5m | 12 | 4 | Roll    | 746-1247220ww |
|   | LED 14,4W/m | 24   | 1475      | >80 | 4000K | 5m | 12 | 4 | Roll    | 746-1247220nw |

**ATTENTION:** No resistance to chemical substances or vapours (e.g. chlorine and similar). In order to guarantee a long service life and perfect functioning of the LED stripes, they must be mounted on heat conducting material!

|             |    |      |     |       |            |    |   |           |                   |
|-------------|----|------|-----|-------|------------|----|---|-----------|-------------------|
| LED 14,4W/m | 24 | 1395 | >80 | 3000K | your order | 12 | 4 | per meter | 746-1247220wkonf  |
| LED 14,4W/m | 24 | 1475 | >80 | 4000K | your order | 12 | 4 | per meter | 746-1247220nwkonf |

Please calculate per cut 1x 746-konfip20 additionally.

#### ACCESSOIRES



**ATTENTION:** Maximum length per feed point 5m

| PRODUCT                                  | CODE         |
|--|--------------|
| FAST POWER FEED incl. 200mm cable        | 746-fc2420w  |
| FAST CONNECTOR                           | 746-lc2420w  |
| LINEAR CONNECTOR FLEX. incl. 100mm cable | 746-lcf2420w |

### CONFIGURATION BASIC LED STRIPES IP20

| INFO   | CODE         |
|--|--------------|
| LED stripe IP20 per cutting includes:<br>Cutting, 50cm connecting cable soldered, system test, packaging | 746-konfip20 |



Project: Private Residence, Austria  
Photo: Interieur Design Leibez  
Product: BASIC LED STRIPE



**LED STRIPE DIM2WARM IP20**



**LED STRIPE TUNABLE WHITE IP20**



**LED STRIPE DIM2WARM 14,4W/M ROLL 5M**

| INFO   | POWER       | V DC | LUMEN / M | CRI | LED         | L  | W  | H   | CODE                  |
|--|-------------|------|-----------|-----|-------------|----|----|-----|-----------------------|
| Flexible BASIC LED stripe, roll 5000mm, 120 SMD2835 LEDs per meter, 14,4W, MacAdam 5 Step Binning, separable each 10cm, fixing with double-sided adhesive tape 3M, without converter | LED 14,4W/m | 24   | 1330      | >80 | 3000K-2200K | 5m | 12 | 1,4 | <b>746-247220wd2w</b> |
|  | LED 14,4W/m | 24   | 1270      | >80 | 2700K-2200K | 5m | 12 | 1,4 | <b>746-247220ud2w</b> |

**ATTENTION:** No resistance to chemical substances or vapours (e.g. chlorine and similar). In order to guarantee a long service life and perfect functioning of the LED stripes, they must be mounted on heat conducting material!!

**ATTENTION:** Maximum length per feed point 5m

**LED STRIPE TUNABLE WHITE 14,4W/M ROLLE 5M**

| INFO   | POWER       | V DC | LUMEN / M     | CRI | LED         | L  | W  | H   | CODE                |
|--|-------------|------|---------------|-----|-------------|----|----|-----|---------------------|
| Flexible BASIC LED stripe, roll 5000mm, 120 SMD2835 LEDs per meter, 14,4W, MacAdam 5 Step Binning, separable each 10cm, fixing with double-sided adhesive tape 3M, without converter | LED 14,4W/m | 24   | 2700K - 736lm | >80 | 2700K-6500K | 5m | 10 | 1,4 | <b>746-241420tw</b> |
|  |             |      | 6500K - 782lm |     |             |    |    |     |                     |

**ATTENTION:** No resistance to chemical substances or vapours (e.g. chlorine and similar). In order to guarantee a long service life and perfect functioning of the LED stripes, they must be mounted on heat conducting material!!

**ATTENTION:** Maximum length per feed point 5m



Project: Hotel Almlust, Flachau, Austria  
 Photo: Hotel Almlust  
 Product: BASIC LED STRIPE



2700K

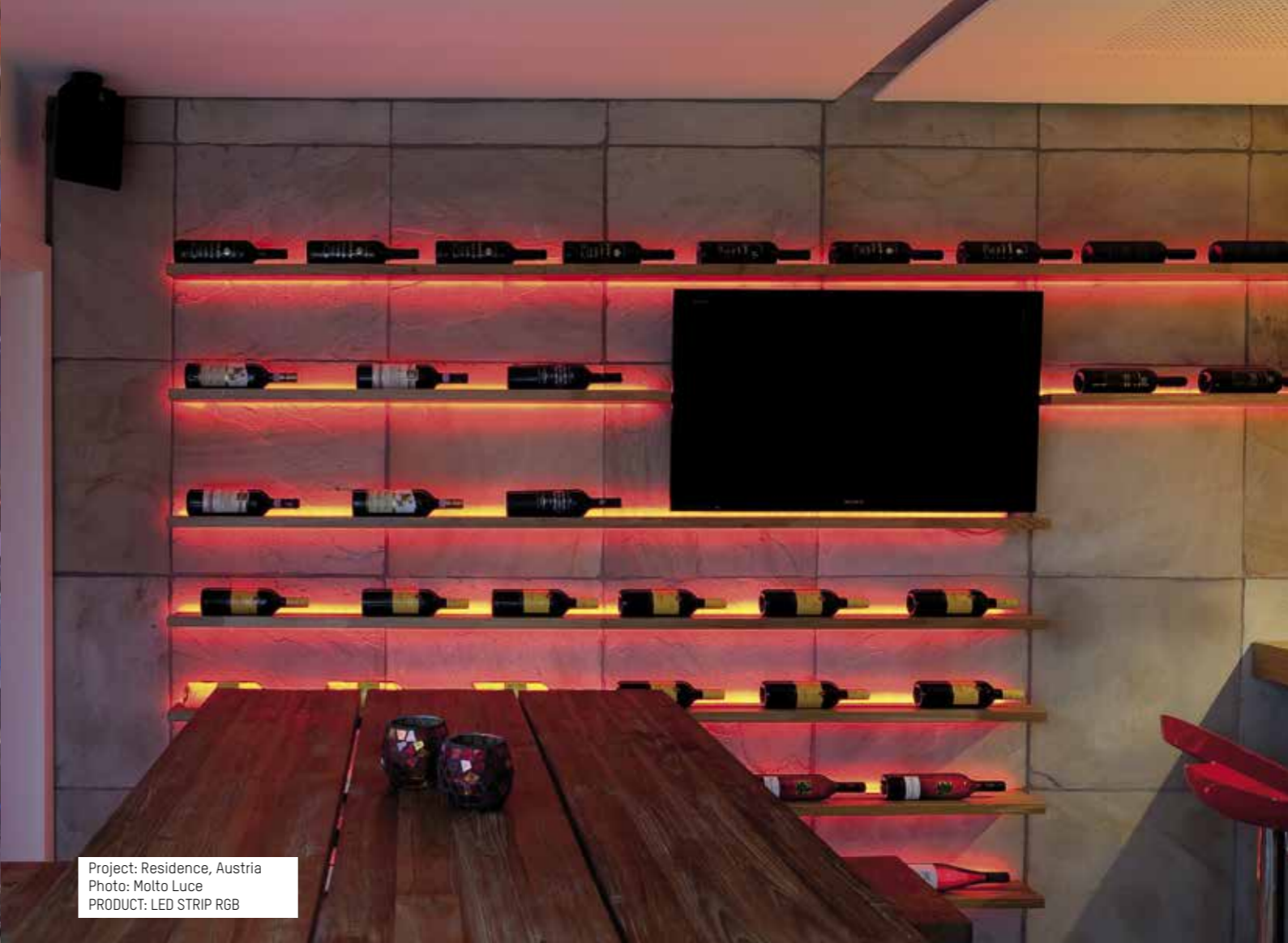
6500K

Project: Private Residence, Austria  
 Product: BASIC LED STRIPE





Project: Restaurant OX, Plus City Pasching, Austria  
Photo: LSD  
PRODUCT: LED STRIP RGB



Project: Residence, Austria  
Photo: Molto Luce  
PRODUCT: LED STRIP RGB



Project: Hotel Flachauerhof, Austria  
PRODUCT: LED STRIP RGB/W



**BASIC LED STRIPE IP20**



**BASIC LED STRIPE RGB W 18,1W/M ROLL 5M**

| INFO  | POWER       | V DC | LUMEN / M                                    | CRI  | LED          | L  | W  | H   | CODE            |
|---|-------------|------|--|------|--------------|----|----|-----|-----------------|
| Flexible BASIC LED stripe RGB-W, roll 5000mm, 480 SMD LEDs, 48 SMD RGB 5050 LEDs/meter, 48 SMD2835 LEDs / meter, 18,1W / meter, separable each 12 LEDs (ca. 13cm), fixing with double-sided adhesive tape 3M, without converter | LED 18,1W/m | 24   | 101 RED<br>279 GREEN<br>65 BLUE<br>428 WHITE | ---- | RGB<br>3000K | 5m | 12 | 2,5 | 746-1249120rgbw |

**ATTENTION:** No resistance to chemical substances or vapours (e.g. chlorine and similar). In order to guarantee a long service life and perfect functioning of the LED stripes, they must be mounted on heat conducting material!

**ATTENTION:** Maximum length per feed point 5m



Project: Kreisel Electric, Austria  
 Planing: Ben Elmecker  
 Photo: Martin Pröll  
 Product: BASIC LED STRIPE RGB-W



Project: Andels Hotel, Lodz, Polen  
 Planing: OP Architects  
 Product: BASIC LED STRIPE RGB-W



Project: Hotel Matschner, Ramsau, Austria  
 Photo: Tischlerei Kotrasch  
 Product: BASIC LED STRIPE RGB-W





Project: ISO CELL, Neumarkt, Austria  
Photo: MOLTO LUCE  
Product: BASIC RGB-W LED STRIPE



## BASIC LED STRIPES IP67



## LED STRIPE TUNABLE WHITE IP67



### BASIC LED STRIPE 4,8W/M ROLL 5M

| INFO  | POWER      | V DC | LUMEN / M | CRI | LED   | L  | W  | H | CODE          |
|---|------------|------|-----------|-----|-------|----|----|---|---------------|
| Flexible BASIC LED stripe, roll 5000mm, 300 SMD5060 LEDs, 60 LEDs / meter, 4,8W / meter, separable each 6 LEDs (ca. 10cm). Stripe must be sealed after separation! fixing with double-sided adhesive tape 3M, with DC plug and 2 sockets, without converter | LED 4,8W/m | 24   | 350       | >80 | 3000K | 5m | 10 | 4 | 746-1242467ww |
|   | LED 4,8W/m | 24   | 370       | >80 | 4000K | 5m | 10 | 4 | 746-1242467nw |

**ATTENTION:** No resistance to chemical substances or vapours (e.g. chlorine and similar). In order to guarantee a long service life and perfect functioning of the LED stripes, they must be mounted on heat conducting material!

**ATTENTION:** Maximum length per feed point 5m

#### ACCESSORIES



order separately

| PRODUCT                     | CODE     |
|-----------------------------|----------|
| SILICON END CAP             | 746-1003 |
| SHRINK TUBE                 | 746-1004 |
| FEED IN COVER               | 746-1101 |
| DC PLUG incl. 130mm cable   | 746-1100 |
| DC SOCKET incl. 130mm cable | 746-1200 |

### LED STRIPE TUNABLE WHITE 14,4W/M ROLL 5M

| INFO  | POWER       | V DC | LUMEN / M     | CRI | LED         | L  | W  | H   | CODE         |
|---|-------------|------|---------------|-----|-------------|----|----|-----|--------------|
| Flexible BASIC LED stripe, roll 5000mm, 300 SMD2835 LEDs, 120 LEDs / meter, 14,4W / meter, separable each 6 LEDs (ca. 10cm). Stripe must be sealed after separation! fixing with double-sided adhesive tape 3M, with DC plug and 2 sockets, without converter | LED 14,4W/m | 24   | 2700K - 519lm | >80 | 2700K-6500K | 5m | 12 | 5,5 | 746-241467tw |
|   |             |      | 6500K - 526lm |     |             |    |    |     |              |

**ATTENTION:** No resistance to chemical substances or vapours (e.g. chlorine and similar). In order to guarantee a long service life and perfect functioning of the LED stripes, they must be mounted on heat conducting material!

**ATTENTION:** Maximum length per feed point 5m

#### ACCESSORIES



order separately

| PRODUCT         | CODE     |
|-----------------|----------|
| SILICON END CAP | 746-1003 |
| SHRINK TUBE     | 746-1004 |
| FEED IN COVER   | 746-1101 |

### BASIC LED STRIPE 14,4W/M ROLL 5M

| INFO   | POWER       | V DC | LUMEN / M | CRI | LED   | L  | W    | H | CODE          |
|--|-------------|------|-----------|-----|-------|----|------|---|---------------|
| Flexible BASIC LED stripe, roll 5000mm, 300 SMD5060 LEDs, 60 LEDs / meter, 14,4W / meter, separable each 6 LEDs (ca. 10cm). Stripe must be sealed after separation! fixing with double-sided adhesive tape 3M, with DC plug and 2 sockets, without converter | LED 14,4W/m | 24   | 1090      | >80 | 3000K | 5m | 14,2 | 4 | 746-2247267ww |
|  | LED 14,4W/m | 24   | 1130      | >80 | 4000K | 5m | 14,2 | 4 | 746-1247267nw |

**ATTENTION:** No resistance to chemical substances or vapours (e.g. chlorine and similar). In order to guarantee a long service life and perfect functioning of the LED stripes, they must be mounted on heat conducting material!

**ATTENTION:** Maximum length per feed point 5m

#### ACCESSORIES



order separately

| PRODUCT                     | CODE     |
|-----------------------------|----------|
| SILICON END CAP             | 746-1001 |
| SHRINK TUBE                 | 746-1004 |
| FEED IN COVER               | 746-1101 |
| DC PLUG incl. 130mm cable   | 746-1100 |
| DC SOCKET incl. 130mm cable | 746-1200 |



Project: Kreisel Electric, Austria  
Planung / Umsetzung: Ben Elmecker  
Photo: Martin Pröll  
Product: BASIC LED STRIPE IP67



**BASIC 48V LED STRIPE IP67**

**48V**



**BASIC 48V LED STRIPE IP67 4,8W/M ROLL 10M**

| INFO  | POWER     | V DC | LUMEN / M | CRI | LED   | L   | W  | H | CODE                |
|---|-----------|------|-----------|-----|-------|-----|----|---|---------------------|
| Flexible BASIC LED stripe, 48V supply voltage, roll 10m, 120 LED/m, separable each ca. 10cm. Stripe must be sealed after separation! fixing with double-sided adhesive tape 3M, without converter | LED 4,8Wm | 48   | 418       | >80 | 3000K | 10m | 14 | 6 | <b>746-484867ww</b> |
|   | LED 4,8Wm | 48   | 418       | >80 | 4000K | 10m | 14 | 6 | <b>746-484867nw</b> |

| ACCESSORIES             |                             | ARTIKEL  | CODE |
|-------------------------|-----------------------------|----------|------|
| <p>order separately</p> | SILICON END CAP             | 746-1001 |      |
|                         | SHRINK TUBE                 | 746-1004 |      |
|                         | FEED IN COVER               | 746-1101 |      |
|                         | DC PLUG incl. 130mm cable   | 746-1100 |      |
|                         | DC SOCKET incl. 130mm cable | 746-1200 |      |

| CONVERTER 50W SWITCHABLE | INFO   | W  | V DC | L   | W  | H  | COLOUR   | CODE             |
|--------------------------|--|----|------|-----|----|----|----------|------------------|
|                          | Converter for LED Stripes 48V, not dimmable, 230 VAC | 50 | 48   | 225 | 60 | 49 | <b>W</b> | <b>24-122766</b> |



| CONVERTER 150W SWITCHABLE | INFO   | W   | V DC | L   | W  | H  | COLOUR   | CODE             |
|---------------------------|--|-----|------|-----|----|----|----------|------------------|
|                           | Converter for LED Stripes 48V, not dimmable, 230 VAC | 150 | 48   | 240 | 60 | 49 | <b>W</b> | <b>24-122764</b> |



| UNIVERSALDIMMER | INFO  | V DC  | L   | W  | H  | COLOUR   | CODE              |
|-----------------|---|-------|-----|----|----|----------|-------------------|
|                 | Universaldimmer 1 chanel, separate control input for DALI, 1-10V, Push, sync connection for max. 9 slaves by 1-10V or Push control, max. connection: 5A<br>Order strain relief separately | 12-50 | 153 | 30 | 21 | <b>W</b> | <b>322-ud3000</b> |
|                 | STRAIN RELIEF<br>for 1-chanal Universaldimmer, 2 pce.   |       |     |    |    |          | <b>322-ud7001</b> |





**BASIC LED STRIPE RGB/W IP67**



**BASIC LED STRIPE RGB W 18,1W/M ROLL 5M**

| INFO   | POWER       | V DC | LUMEN / M                                   | CRI                 | LED          | L  | W  | H   | CODE            |
|--|-------------|------|---|---------------------|--------------|----|----|-----|-----------------|
| Flexible BASIC LED stripe RGB-W, roll 5000mm, 480 SMD LEDs, 48 SMD RGB 5050 LEDs/meter, 48 SMD2835 LEDs / meter, 18,1W / meter, separable each 12 LEDs (approx. 13cm), Stripe must be sealed after separation! Fixing with double-sided adhesive tape 3M, with DC plug and 2 sockets, without converter, | LED 18,1W/m | 24   | 78 RED<br>198 GREEN<br>52 BLUE<br>294 WHITE | ----<br>>80 (White) | RGB<br>3000K | 5m | 15 | 5,5 | 746-1249167rgbw |

**ATTENTION:** No resistance to chemical substances or vapours (e.g. chlorine and similar). In order to guarantee a long service life and perfect functioning of the LED stripes, they must be mounted on heat conducting material!

**Attention:** Maximum length per feed point 5m



Project: Dorfbahn, Gerlos, Austria  
Photo: Dorfbahn Gerlos  
Product: LED STRIPE RGB-W IP67

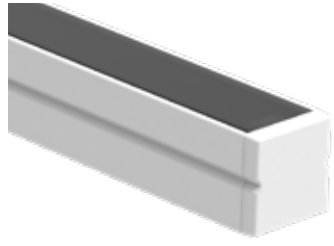


Project: Cafe Central, Linz, Austria  
Photo: LSD  
Product: LED STRIPE RGB-W IP67



**SURFACE PROFILES FROM ALUMINIUM FOR LED STRIPES**

**MINI 10 SURFACE**



**MINI 14 SURFACE**



**MINI 17 SURFACE**



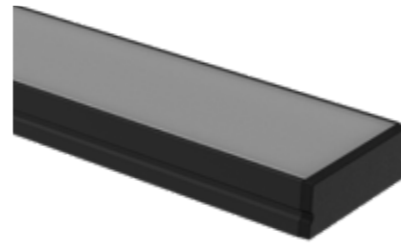
**MIDI SURFACE**



**MAXI SURFACE**



**MEGA SURFACE**



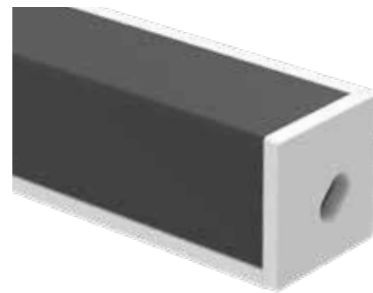
**MINI CORNER SURFACE**



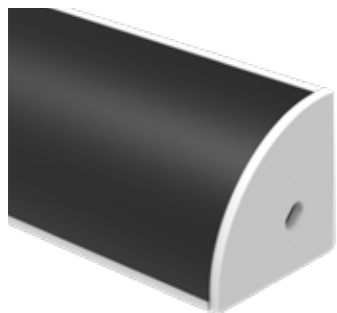
**MIDI CORNER SURFACE**



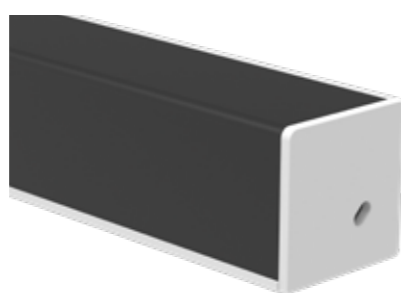
**MIDI CORNER SURFACE**



**MAXI CORNER SURFACE**



**MAXI CORNER SURFACE**



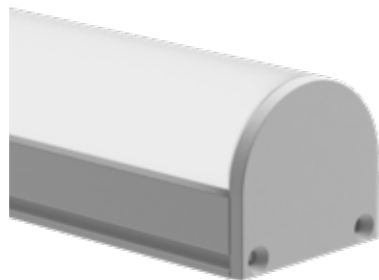
**FLEX SURFACE**



**MIDI CUBE SURFACE**



**MAXI SOFT SURFACE**

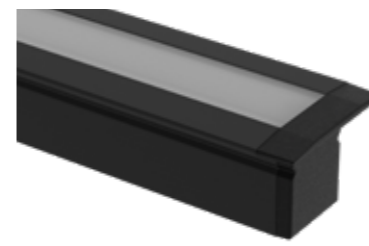


**RIDE SURFACE**

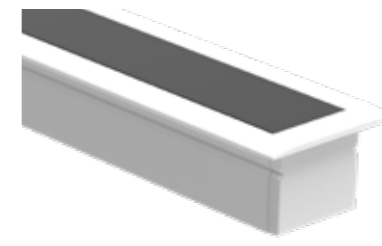


**RECESSED PROFILES FROM ALUMINIUM FOR LED STRIPES**

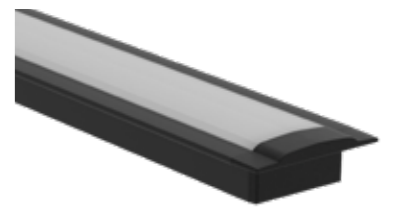
**MINI 10 RECESSED**



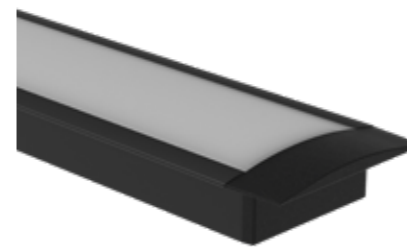
**MINI 14 RECESSED**



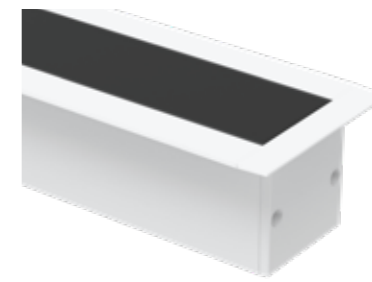
**MINI 17 RECESSED**



**MIDI RECESSED**



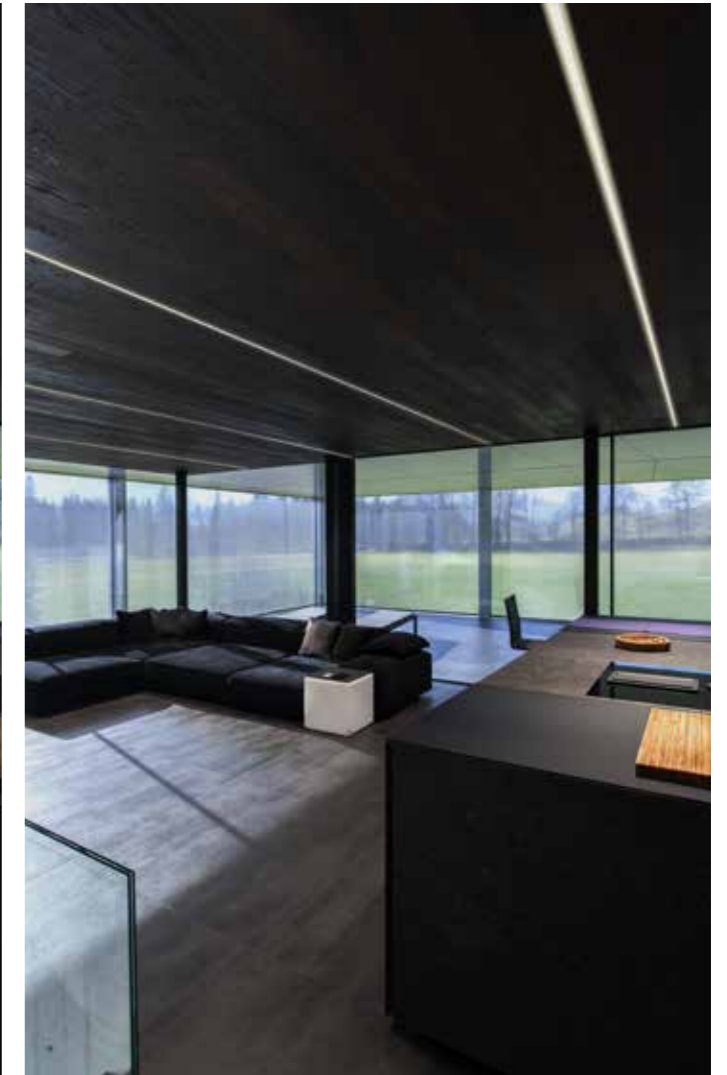
**MAXI RECESSED**



**RIDE RECESSED**



MAXI recessed profile with black satined cover





## SURFACE PROFILES FROM ALUMINIUM FOR LED STRIPES

### MINI 10 SURFACE

| DETAIL | PRODUCT                 | L                  | W               | H  | COLOUR        | CODE         |
|--------|-------------------------|--------------------|-----------------|----|---------------|--------------|
|        | PROFILE                 | 2000               | 10              | 10 | W             | 600-1a201w   |
|        | PROFILE                 | 2000               | 10              | 10 | S             | 600-1a201b   |
|        | PROFILE                 | 2000               | 10              | 10 | AE            | 600-1a201s   |
|        | <b>PRODUCT</b>          |                    | <b>MATERIAL</b> |    | <b>COLOUR</b> | <b>CODE</b>  |
|        | END CAPS (Set 2 pcs.)   | PLASTIC            |                 |    | W             | 600-1aek201w |
|        | END CAPS (Set 2 pcs.)   | PLASTIC            |                 |    | S             | 600-1aek201b |
|        | END CAPS (Set 2 pcs.)   | PLASTIC            |                 |    | S             | 600-1aek201s |
|        | <b>PRODUCT</b>          | <b>MATERIAL</b>    |                 |    | <b>COLOUR</b> | <b>CODE</b>  |
|        | COVER                   | PMMA WHITE SATINED |                 |    | WO            | 600-1c201    |
|        | COVER                   | PMMA BLACK SATINED |                 |    | SO            | 600-cb201    |
|        | <b>PRODUCT</b>          | <b>MATERIAL</b>    |                 |    | <b>COLOUR</b> | <b>CODE</b>  |
|        | MOUNTING CLIPS (2 Stk.) | STAINLESS STEEL    |                 |    | E             | 600-mc201    |

Surface mounted profile MINI 10 for flexible LED stripes up to width 5mm, INFO: for Led stripes up to max. 5 Watt

### MINI 14 SURFACE

| DETAIL | PRODUCT                 | L                  | W  | H | COLOUR        | CODE         |
|--------|-------------------------|--------------------|----|---|---------------|--------------|
|        | PROFILE                 | 2000               | 14 | 8 | W             | 600-1a202w   |
|        | PROFILE                 | 2000               | 14 | 8 | S             | 600-1a202b   |
|        | PROFILE                 | 2000               | 14 | 8 | AE            | 600-1a202s   |
|        | <b>PRODUCT</b>          | <b>MATERIAL</b>    |    |   | <b>COLOUR</b> | <b>CODE</b>  |
|        | END CAPS (Set 2 pcs.)   | PLASTIC            |    |   | W             | 600-1aek202w |
|        | END CAPS (Set 2 pcs.)   | PLASTIC            |    |   | S             | 600-1aek202b |
|        | END CAPS (Set 2 pcs.)   | PLASTIC            |    |   | S             | 600-1aek202s |
|        | <b>PRODUCT</b>          | <b>MATERIAL</b>    |    |   | <b>COLOUR</b> | <b>CODE</b>  |
|        | COVER                   | PMMA WHITE SATINED |    |   | WO            | 600-1c202    |
|        | COVER                   | PMMA BLACK SATINED |    |   | SO            | 600-cb202    |
|        | <b>PRODUCT</b>          | <b>MATERIAL</b>    |    |   | <b>COLOUR</b> | <b>CODE</b>  |
|        | MOUNTING CLIPS (2 Stk.) | STAINLESS STEEL    |    |   | E             | 600-amc202   |

Surface mounted profile MINI 14 for flexible LED stripes up to width 8mm, INFO: for Led stripes up to max. 9 Watt

### MINI 17 SURFACE

| DETAIL | PRODUCT                 | L                  | W  | H   | COLOUR        | CODE        |
|--------|-------------------------|--------------------|----|-----|---------------|-------------|
|        | PROFILE                 | 2000               | 17 | 8,8 | W             | 600-a203w   |
|        | PROFILE                 | 2000               | 17 | 8,8 | S             | 600-a203b   |
|        | PROFILE                 | 2000               | 17 | 8,8 | AE            | 600-a203s   |
|        | <b>PRODUCT</b>          | <b>MATERIAL</b>    |    |     | <b>COLOUR</b> | <b>CODE</b> |
|        | END CAPS (Set 2 pcs.)   | PLASTIC            |    |     | W             | 600-aek203w |
|        | END CAPS (Set 2 pcs.)   | PLASTIC            |    |     | S             | 600-aek203b |
|        | END CAPS (Set 2 pcs.)   | PLASTIC            |    |     | S             | 600-aek203s |
|        | <b>PRODUCT</b>          | <b>MATERIAL</b>    |    |     | <b>COLOUR</b> | <b>CODE</b> |
|        | COVER                   | PMMA WHITE SATINED |    |     | WO            | 600-c203    |
|        | COVER                   | PMMA BLACK SATINED |    |     | SO            | 600-cb203   |
|        | <b>PRODUCT</b>          | <b>MATERIAL</b>    |    |     | <b>COLOUR</b> | <b>CODE</b> |
|        | MOUNTING CLIPS (2 Stk.) | STAINLESS STEEL    |    |     | E             | 600-mc203   |

Surface mounted profile MINI 17 for flexible LED stripes up to width 12mm, INFO: for Led stripes up to max. 18 Watt

## RECESSED PROFILES FROM ALUMINIUM FOR LED STRIPES

### MINI 10 RECESSED

| DETAIL | PRODUCT                 | L                  | W  | H  | COLOUR        | CODE         |
|--------|-------------------------|--------------------|----|----|---------------|--------------|
|        | PROFILE                 | 2000               | 18 | 13 | W             | 600-1e201w   |
|        | PROFILE                 | 2000               | 18 | 13 | S             | 600-1e201b   |
|        | PROFILE                 | 2000               | 18 | 13 | AE            | 600-1e201s   |
|        | <b>PRODUCT</b>          | <b>MATERIAL</b>    |    |    | <b>COLOUR</b> | <b>CODE</b>  |
|        | END CAPS (Set 2 pcs.)   | PLASTIC            |    |    | W             | 600-1eek201w |
|        | END CAPS (Set 2 pcs.)   | PLASTIC            |    |    | S             | 600-1eek201b |
|        | END CAPS (Set 2 pcs.)   | PLASTIC            |    |    | S             | 600-1eek201s |
|        | <b>PRODUCT</b>          | <b>MATERIAL</b>    |    |    | <b>COLOUR</b> | <b>CODE</b>  |
|        | COVER                   | PMMA WHITE SATINED |    |    | WO            | 600-0c201    |
|        | COVER                   | PMMA BLACK SATINED |    |    | SO            | 600-cb201    |
|        | <b>PRODUCT</b>          | <b>MATERIAL</b>    |    |    | <b>COLOUR</b> | <b>CODE</b>  |
|        | MOUNTING CLIPS (2 Stk.) | STAINLESS STEEL    |    |    | E             | 600-mc201    |

Recessed profile MINI 10 for flexible LED stripes up to width 5mm, INFO: for Led stripes up to max. 5 Watt, mounting depth: 15mm, cutout: width 12mm, when using end caps: add +4mm to profile length

### MINI 14 RECESSED

| DETAIL | PRODUCT                 | L                  | W  | H  | COLOUR        | CODE         |
|--------|-------------------------|--------------------|----|----|---------------|--------------|
|        | PROFILE                 | 2000               | 22 | 13 | W             | 600-1e202w   |
|        | PROFILE                 | 2000               | 22 | 13 | S             | 600-1e202b   |
|        | PROFILE                 | 2000               | 22 | 13 | AE            | 600-1e202s   |
|        | <b>PRODUCT</b>          | <b>MATERIAL</b>    |    |    | <b>COLOUR</b> | <b>CODE</b>  |
|        | END CAPS (Set 2 pcs.)   | PLASTIC            |    |    | W             | 600-1eek202w |
|        | END CAPS (Set 2 pcs.)   | PLASTIC            |    |    | S             | 600-1eek202b |
|        | END CAPS (Set 2 pcs.)   | PLASTIC            |    |    | S             | 600-1eek202s |
|        | <b>PRODUCT</b>          | <b>MATERIAL</b>    |    |    | <b>COLOUR</b> | <b>CODE</b>  |
|        | COVER                   | PMMA WHITE SATINED |    |    | WO            | 600-1c202    |
|        | COVER                   | PMMA BLACK SATINED |    |    | SO            | 600-cb202    |
|        | <b>PRODUCT</b>          | <b>MATERIAL</b>    |    |    | <b>COLOUR</b> | <b>CODE</b>  |
|        | MOUNTING CLIPS (2 Stk.) | STAINLESS STEEL    |    |    | E             | 600-emc202   |

Recessed profile MINI 14 for flexible LED stripes up to width 8mm, INFO: for Led stripes up to max. 9 Watt, mounting depth: 15mm, cutout: width 16mm, when using end caps: add +4mm to profile length

### MINI 17 RECESSED

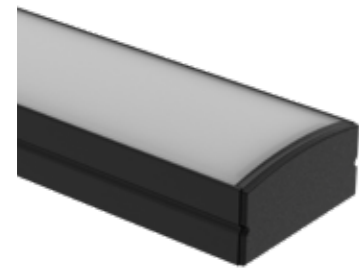
| DETAIL | PRODUCT                 | L                  | W  | H | COLOUR        | CODE        |
|--------|-------------------------|--------------------|----|---|---------------|-------------|
|        | PROFILE                 | 2000               | 24 | 9 | W             | 600-e203w   |
|        | PROFILE                 | 2000               | 24 | 9 | S             | 600-e203b   |
|        | PROFILE                 | 2000               | 24 | 9 | AE            | 600-e203s   |
|        | <b>PRODUCT</b>          | <b>MATERIAL</b>    |    |   | <b>COLOUR</b> | <b>CODE</b> |
|        | END CAPS (Set 2 pcs.)   | PLASTIC            |    |   | W             | 600-eek203w |
|        | END CAPS (Set 2 pcs.)   | PLASTIC            |    |   | S             | 600-eek203b |
|        | END CAPS (Set 2 pcs.)   | PLASTIC            |    |   | S             | 600-eek203s |
|        | <b>PRODUCT</b>          | <b>MATERIAL</b>    |    |   | <b>COLOUR</b> | <b>CODE</b> |
|        | COVER                   | PMMA WHITE SATINED |    |   | WO            | 600-c203    |
|        | COVER                   | PMMA BLACK SATINED |    |   | SO            | 600-cb203   |
|        | <b>PRODUCT</b>          | <b>MATERIAL</b>    |    |   | <b>COLOUR</b> | <b>CODE</b> |
|        | MOUNTING CLIPS (2 Stk.) | STAINLESS STEEL    |    |   | E             | 600-mc203   |

Recessed profile MINI 17 for flexible LED stripes up to width 12mm, INFO: for Led stripes up to max. 18 Watt, mounting depth: 11mm, cutout: width 19mm, when using end caps: add +4mm to profile length



## SURFACE PROFILES FROM ALUMINIUM FOR LED STRIPES

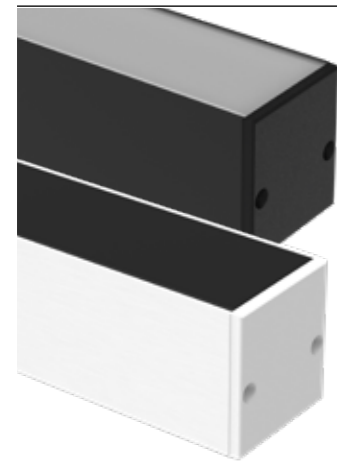
### MIDI SURFACE



Surface mounted profile MIDI for flexible LED stripes up to width 15mm, INFO: for Led stripes up to max. 28 Watt

| DETAIL | PRODUCT                 | L                  | W             | H           | COLOUR | CODE      |
|--------|-------------------------|--------------------|---------------|-------------|--------|-----------|
|        | PROFILE                 | 2000               | 23            | 11,2        | W      | 600-a204w |
|        | PROFILE                 | 2000               | 23            | 11,2        | S      | 600-a204b |
|        | PROFILE                 | 2000               | 23            | 11,2        | AE     | 600-a204s |
|        | <b>PRODUCT</b>          | <b>MATERIAL</b>    | <b>COLOUR</b> | <b>CODE</b> |        |           |
|        | END CAPS (Set 2 pcs.)   | PLASTIC            | W             | 600-aek204w |        |           |
|        | END CAPS (Set 2 pcs.)   | PLASTIC            | S             | 600-aek204b |        |           |
|        | END CAPS (Set 2 pcs.)   | PLASTIC            | S             | 600-aek204s |        |           |
|        | <b>PRODUCT</b>          | <b>MATERIAL</b>    | <b>COLOUR</b> | <b>CODE</b> |        |           |
|        | COVER                   | PMMA WHITE SATINED | wo            | 600-c204    |        |           |
|        | COVER                   | PMMA CLEAR         | K             | 600-ck204   |        |           |
|        | <b>PRODUCT</b>          | <b>MATERIAL</b>    | <b>COLOUR</b> | <b>CODE</b> |        |           |
|        | MOUNTING CLIPS (2 Stk.) | STAINLESS STEEL    | E             | 600-mc204   |        |           |
|        |                         |                    |               |             |        |           |

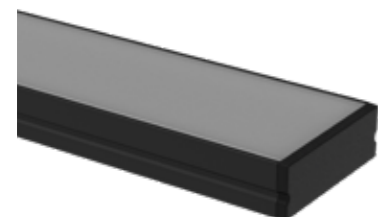
### MAXI SURFACE



Surface mounted profile MAXI for flexible LED stripes up to width 15mm, INFO: for Led stripes up to max. 28 Watt

| DETAIL | PRODUCT                 | L                  | W             | H            | COLOUR | CODE      |
|--------|-------------------------|--------------------|---------------|--------------|--------|-----------|
|        | PROFILE                 | 2000               | 23            | 25           | W      | 600-a205w |
|        | PROFILE                 | 2000               | 23            | 25           | S      | 600-a205b |
|        | PROFILE                 | 2000               | 23            | 25           | AE     | 600-a205s |
|        | <b>PRODUCT</b>          | <b>MATERIAL</b>    | <b>COLOUR</b> | <b>CODE</b>  |        |           |
|        | END CAPS (Set 2 pcs.)   | PLASTIC            | W             | 600-aek205w  |        |           |
|        | END CAPS (Set 2 pcs.)   | PLASTIC            | S             | 600-aek205b  |        |           |
|        | END CAPS (Set 2 pcs.)   | PLASTIC            | S             | 600-aek205s  |        |           |
|        | <b>PRODUCT</b>          | <b>MATERIAL</b>    | <b>COLOUR</b> | <b>CODE</b>  |        |           |
|        | END CAPS (Set 2 pcs.)   | PLASTIC (H 25mm)   | W             | 600-aekc205w |        |           |
|        | END CAPS (Set 2 pcs.)   | PLASTIC (H 25mm)   | S             | 600-aekc205b |        |           |
|        | END CAPS (Set 2 pcs.)   | PLASTIC (H 25mm)   | S             | 600-aekc205s |        |           |
|        | <b>PRODUCT</b>          | <b>MATERIAL</b>    | <b>COLOUR</b> | <b>CODE</b>  |        |           |
|        | COVER FLAT              | PMMA WHITE SATINED | wo            | 600-c205     |        |           |
|        | COVER CUBIC             | PMMA WHITE SATINED | wo            | 600-cu205    |        |           |
|        | COVER FLAT              | PMMA BLACK SATINED | so            | 600-cb205    |        |           |
|        | <b>PRODUCT</b>          | <b>MATERIAL</b>    | <b>COLOUR</b> | <b>CODE</b>  |        |           |
|        | MOUNTING CLIPS (2 Stk.) | STAINLESS STEEL    | E             | 600-amc205   |        |           |
|        |                         |                    |               |              |        |           |

### MEGA SURFACE

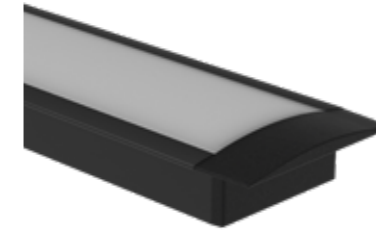


Surface mounted profile MEGA for flexible LED stripes up to width 15mm, INFO: for Led stripes up to max. 28 Watt

| DETAIL | PRODUCT                 | L                  | W             | H           | COLOUR | CODE      |
|--------|-------------------------|--------------------|---------------|-------------|--------|-----------|
|        | PROFILE                 | 2000               | 30            | 10,1        | W      | 600-a206w |
|        | PROFILE                 | 2000               | 30            | 10,1        | S      | 600-a206b |
|        | PROFILE                 | 2000               | 30            | 10,1        | AE     | 600-a206s |
|        | <b>PRODUCT</b>          | <b>MATERIAL</b>    | <b>COLOUR</b> | <b>CODE</b> |        |           |
|        | END CAPS (Set 2 pcs.)   | PLASTIC            | W             | 600-aek206w |        |           |
|        | END CAPS (Set 2 pcs.)   | PLASTIC            | S             | 600-aek206b |        |           |
|        | END CAPS (Set 2 pcs.)   | PLASTIC            | S             | 600-aek206s |        |           |
|        | <b>PRODUCT</b>          | <b>MATERIAL</b>    | <b>COLOUR</b> | <b>CODE</b> |        |           |
|        | COVER                   | PMMA WHITE SATINED | wo            | 600-c206    |        |           |
|        |                         |                    |               |             |        |           |
|        | <b>PRODUCT</b>          | <b>MATERIAL</b>    | <b>COLOUR</b> | <b>CODE</b> |        |           |
|        | MOUNTING CLIPS (2 Stk.) | STAINLESS STEEL    | E             | 600-amc206  |        |           |
|        |                         |                    |               |             |        |           |

## RECESSED PROFILES FROM ALUMINIUM FOR LED STRIPES

### MIDI RECESSED



Recessed profile MIDI for flexible LED stripes up to width 15mm, INFO: for Led stripes up to max. 28 Watt, mounting depth: 15mm, cutout: width 24mm, when using end caps: add +4mm to profile length

| DETAIL | PRODUCT                 | L                  | W             | H           | COLOUR | CODE      |
|--------|-------------------------|--------------------|---------------|-------------|--------|-----------|
|        | PROFILE                 | 2000               | 30            | 11,2        | W      | 600-e204w |
|        | PROFILE                 | 2000               | 30            | 11,2        | S      | 600-e204b |
|        | PROFILE                 | 2000               | 30            | 11,2        | AE     | 600-e204s |
|        | <b>PRODUCT</b>          | <b>MATERIAL</b>    | <b>COLOUR</b> | <b>CODE</b> |        |           |
|        | END CAPS (Set 2 pcs.)   | PLASTIC            | W             | 600-eek204w |        |           |
|        | END CAPS (Set 2 pcs.)   | PLASTIC            | S             | 600-eek204b |        |           |
|        | END CAPS (Set 2 pcs.)   | PLASTIC            | S             | 600-eek204s |        |           |
|        | <b>PRODUCT</b>          | <b>MATERIAL</b>    | <b>COLOUR</b> | <b>CODE</b> |        |           |
|        | COVER                   | PMMA WHITE SATINED | wo            | 600-c204    |        |           |
|        | COVER                   | PMMA CLEAR         | K             | 600-ck204   |        |           |
|        | <b>PRODUCT</b>          | <b>MATERIAL</b>    | <b>COLOUR</b> | <b>CODE</b> |        |           |
|        | MOUNTING CLIPS (2 pcs.) | STAINLESS STEEL    | E             | 600-mc204   |        |           |
|        |                         |                    |               |             |        |           |
|        | <b>PRODUCT</b>          | <b>MATERIAL</b>    | <b>COLOUR</b> | <b>CODE</b> |        |           |
|        | MOUNTING CLIPS (2 pcs.) | STAINLESS STEEL    | E             | 600-emc204  |        |           |
|        |                         |                    |               |             |        |           |

### MAXI RECESSED

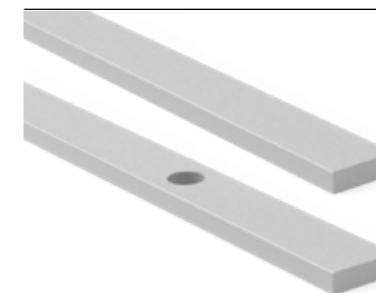


Recessed profile MAXI for flexible LED stripes up to width 15mm, INFO: for Led stripes up to max. 28 Watt, mounting depth: 28mm, cutout: width 24mm, when using end caps: add +4mm to profile length

| DETAIL | PRODUCT                 | L                  | W             | H            | COLOUR | CODE      |
|--------|-------------------------|--------------------|---------------|--------------|--------|-----------|
|        | PROFILE                 | 2000               | 37            | 25           | W      | 600-e205w |
|        | PROFILE                 | 2000               | 37            | 25           | S      | 600-e205b |
|        | PROFILE                 | 2000               | 37            | 25           | AE     | 600-e205s |
|        | <b>PRODUCT</b>          | <b>MATERIAL</b>    | <b>COLOUR</b> | <b>CODE</b>  |        |           |
|        | END CAPS (Set 2 pcs.)   | PLASTIC            | W             | 600-eek205w  |        |           |
|        | END CAPS (Set 2 pcs.)   | PLASTIC            | S             | 600-eek205b  |        |           |
|        | END CAPS (Set 2 pcs.)   | PLASTIC            | S             | 600-eek205s  |        |           |
|        | <b>PRODUCT</b>          | <b>MATERIAL</b>    | <b>COLOUR</b> | <b>CODE</b>  |        |           |
|        | END CAPS (Set 2 pcs.)   | PLASTIC (H 25mm)   | W             | 600-eekc205w |        |           |
|        | END CAPS (Set 2 pcs.)   | PLASTIC (H 25mm)   | S             | 600-eekc205b |        |           |
|        | END CAPS (Set 2 pcs.)   | PLASTIC (H 25mm)   | S             | 600-eekc205s |        |           |
|        | <b>PRODUCT</b>          | <b>MATERIAL</b>    | <b>COLOUR</b> | <b>CODE</b>  |        |           |
|        | COVER FLAT              | PMMA WHITE SATINED | wo            | 600-c205     |        |           |
|        | COVER CUBIC             | PMMA WHITE SATINED | wo            | 600-cu205    |        |           |
|        | COVER FLAT              | PMMA BLACK SATINED | so            | 600-cb205    |        |           |
|        | <b>PRODUCT</b>          | <b>MATERIAL</b>    | <b>COLOUR</b> | <b>CODE</b>  |        |           |
|        | MOUNTING CLIPS (2 Stk.) | STAINLESS STEEL    | E             | 600-emc205   |        |           |
|        |                         |                    |               |              |        |           |

## ACCESSORIES

### COOL

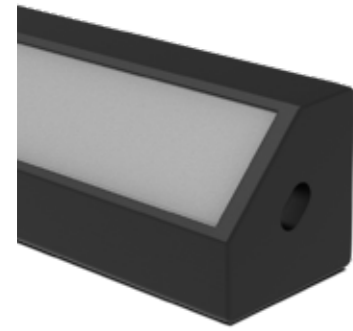


| PRODUCT                      | L    | W  | H | COLOUR | CODE      |
|------------------------------|------|----|---|--------|-----------|
| ALUMINIUM STRIPES            | 1000 | 10 | 3 | AN     | 600-1000  |
| ALUMINIUM STRIPES WITH HOLES | 1000 | 10 | 3 | AN     | 600-1000b |
|                              |      |    |   |        |           |
| PRODUCT                      | L    | W  | H | COLOUR | CODE      |
| ALUMINIUM STRIPES            | 3000 | 10 | 3 | AN     | 600-3000  |
| ALUMINIUM STRIPES WITH HOLES | 3000 | 10 | 3 | AN     | 600-3000b |



**CORNER PROFILES FOR LED STRIPES FROM ALUMINIUM**

**MINI CORNER SURFACE**

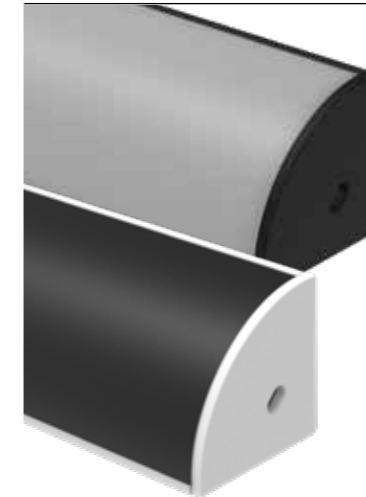


Surface mounted profile MINI CORNER for flexible LED stripes up to width 8mm, INFO: for Led stripes up to max. 12 Watt

| DETAIL | PRODUCT                 | L                  | W             | H           | COLOUR | CODE      |
|--------|-------------------------|--------------------|---------------|-------------|--------|-----------|
|        | PROFILE                 | 2000               | 18,5          | 18,5        | W      |           |
|        | PROFILE                 | 2000               | 18,5          | 18,5        | S      | 600-a209b |
|        | PROFILE                 | 2000               | 18,5          | 18,5        | AE     | 600-a209s |
|        | <b>PRODUCT</b>          | <b>MATERIAL</b>    | <b>COLOUR</b> | <b>CODE</b> |        |           |
|        | END CAPS (Set 2 pcs.)   | PLASTIC            | W             | 600-aek209w |        |           |
|        | END CAPS (Set 2 pcs.)   | PLASTIC            | S             | 600-aek209b |        |           |
|        | END CAPS (Set 2 pcs.)   | PLASTIC            | S             | 600-aek209s |        |           |
|        | <b>PRODUCT</b>          | <b>MATERIAL</b>    | <b>COLOUR</b> | <b>CODE</b> |        |           |
|        | COVER                   | PMMA WHITE SATINED | WO            | 600-c209    |        |           |
|        | COVER                   | PMMA WHITE SATINED | SO            |             |        |           |
|        | <b>PRODUCT</b>          | <b>MATERIAL</b>    | <b>COLOUR</b> | <b>CODE</b> |        |           |
|        | MOUNTING CLIPS (2 Stk.) | STAINLESS STEEL    | E             | 600-amc209  |        |           |

**CORNER PROFILES FOR LED STRIPES FROM ALUMINIUM**

**MAXI CORNER SURFACE**



Surface mounted profile MAXI CORNER for flexible LED stripes up to width 15mm, INFO: for Led stripes up to max. 28 Watt

| DETAIL | PRODUCT                 | L                  | W             | H            | COLOUR | CODE      |
|--------|-------------------------|--------------------|---------------|--------------|--------|-----------|
|        | PROFILE                 | 2000               | 30            | 30           | W      | 600-a208w |
|        | PROFILE                 | 2000               | 30            | 30           | S      | 600-a208b |
|        | PROFILE                 | 2000               | 30            | 30           | AE     | 600-a208s |
|        | <b>PRODUCT</b>          | <b>MATERIAL</b>    | <b>COLOUR</b> | <b>CODE</b>  |        |           |
|        | END CAPS (Set 2 pcs.)   | PLASTIC            | W             | 600-aekr208w |        |           |
|        | END CAPS (Set 2 pcs.)   | PLASTIC            | S             | 600-aekr208b |        |           |
|        | END CAPS (Set 2 pcs.)   | PLASTIC            | S             | 600-aekr208s |        |           |
|        | <b>PRODUCT</b>          | <b>MATERIAL</b>    | <b>COLOUR</b> | <b>CODE</b>  |        |           |
|        | COVER                   | PMMA WHITE SATINED | WO            | 600-cr208    |        |           |
|        | COVER                   | PMMA BLACK SATINED | SO            | 600-crb208   |        |           |
|        | <b>PRODUCT</b>          | <b>MATERIAL</b>    | <b>COLOUR</b> | <b>CODE</b>  |        |           |
|        | MOUNTING CLIPS (2 Stk.) | STAINLESS STEEL    | E             | 600-amc208   |        |           |

**MIDI CORNER SURFACE**



Surface mounted profile MIDI CORNER for flexible LED stripes up to width 8mm, INFO: for Led stripes up to max. 9 Watt

| DETAIL | PRODUCT                 | L                  | W             | H            | COLOUR | CODE      |
|--------|-------------------------|--------------------|---------------|--------------|--------|-----------|
|        | PROFILE                 | 2000               | 16            | 16           | W      | 600-a207w |
|        | PROFILE                 | 2000               | 16            | 16           | S      | 600-a207b |
|        | PROFILE                 | 2000               | 16            | 16           | AE     | 600-a207s |
|        | <b>PRODUCT</b>          | <b>MATERIAL</b>    | <b>COLOUR</b> | <b>CODE</b>  |        |           |
|        | END CAPS (Set 2 pcs.)   | PLASTIC            | W             | 600-aekr207w |        |           |
|        | END CAPS (Set 2 pcs.)   | PLASTIC            | S             | 600-aekr207b |        |           |
|        | END CAPS (Set 2 pcs.)   | PLASTIC            | S             | 600-aekr207s |        |           |
|        | <b>PRODUCT</b>          | <b>MATERIAL</b>    | <b>COLOUR</b> | <b>CODE</b>  |        |           |
|        | COVER                   | PMMA WHITE SATINED | WO            | 600-cr207    |        |           |
|        | COVER                   | PMMA BLACK SATINED | SO            | 600-crb207   |        |           |
|        | <b>PRODUCT</b>          | <b>MATERIAL</b>    | <b>COLOUR</b> | <b>CODE</b>  |        |           |
|        | MOUNTING CLIPS (2 Stk.) | STAINLESS STEEL    | E             | 600-amc207   |        |           |

**MAXI CORNER SURFACE**



Surface mounted profile MAXI CORNER for flexible LED stripes up to width 15mm, INFO: for Led stripes up to max. 28 Watt

| DETAIL | PRODUCT                 | L                  | W             | H           | COLOUR | CODE      |
|--------|-------------------------|--------------------|---------------|-------------|--------|-----------|
|        | PROFILE                 | 2000               | 30            | 30          | W      | 600-a208w |
|        | PROFILE                 | 2000               | 30            | 30          | S      | 600-a208b |
|        | PROFILE                 | 2000               | 30            | 30          | AE     | 600-a208s |
|        | <b>PRODUCT</b>          | <b>MATERIAL</b>    | <b>COLOUR</b> | <b>CODE</b> |        |           |
|        | END CAPS (Set 2 pcs.)   | PLASTIC            | W             | 600-aek208w |        |           |
|        | END CAPS (Set 2 pcs.)   | PLASTIC            | S             | 600-aek208b |        |           |
|        | END CAPS (Set 2 pcs.)   | PLASTIC            | S             | 600-aek208s |        |           |
|        | <b>PRODUCT</b>          | <b>MATERIAL</b>    | <b>COLOUR</b> | <b>CODE</b> |        |           |
|        | COVER                   | PMMA WHITE SATINED | WO            | 600-c208    |        |           |
|        | COVER                   | PMMA BLACK SATINED | SO            | 600-cb208   |        |           |
|        | <b>PRODUCT</b>          | <b>MATERIAL</b>    | <b>COLOUR</b> | <b>CODE</b> |        |           |
|        | MOUNTING CLIPS (2 Stk.) | STAINLESS STEEL    | E             | 600-amc208  |        |           |

**MIDI CORNER SURFACE**



Surface mounted profile MIDI CORNER for flexible LED stripes up to width 8mm, INFO: for Led stripes up to max. 9 Watt

| DETAIL | PRODUCT                 | L                  | W             | H           | COLOUR | CODE      |
|--------|-------------------------|--------------------|---------------|-------------|--------|-----------|
|        | PROFILE                 | 2000               | 16            | 16          | W      | 600-a207w |
|        | PROFILE                 | 2000               | 16            | 16          | S      | 600-a207b |
|        | PROFILE                 | 2000               | 16            | 16          | AE     | 600-a207s |
|        | <b>PRODUCT</b>          | <b>MATERIAL</b>    | <b>COLOUR</b> | <b>CODE</b> |        |           |
|        | END CAPS (Set 2 pcs.)   | PLASTIC            | W             | 600-aek207w |        |           |
|        | END CAPS (Set 2 pcs.)   | PLASTIC            | S             | 600-aek207b |        |           |
|        | END CAPS (Set 2 pcs.)   | PLASTIC            | S             | 600-aek207s |        |           |
|        | <b>PRODUCT</b>          | <b>MATERIAL</b>    | <b>COLOUR</b> | <b>CODE</b> |        |           |
|        | COVER                   | PMMA WHITE SATINED | WO            | 600-c207    |        |           |
|        | COVER                   | PMMA BLACK SATINED | SO            | 600-cb207   |        |           |
|        | <b>PRODUCT</b>          | <b>MATERIAL</b>    | <b>COLOUR</b> | <b>CODE</b> |        |           |
|        | MOUNTING CLIPS (2 Stk.) | STAINLESS STEEL    | E             | 600-amc207  |        |           |



## SURFACE PROFILES FOR LED STRIPES FROM ALUMINIUM

### FLEX SURFACE

| DETAIL  | PRODUCT                              | L                  | W      | H    | COLOUR | CODE        |
|---|--------------------------------------|--------------------|--------|------|--------|-------------|
|   | PROFILE                              | 2000               | 17,8   | 5,1  | AE     | 600-a212s   |
|   | <b>maximum bending radius: 200mm</b> |                    |        |      |        |             |
|   | PRODUCT                              | MATERIAL           | COLOUR | CODE |        |             |
|  | END CAPS (Set 2 pcs.)                | PLASTIC            |        |      | S      | 600-aek212s |
|  | COVER                                | PMMA WHITE SATINED |        |      | WO     | 600-c212    |
| <b>maximum bending radius: 200mm</b>  |                                      |                    |        |      |        |             |
|  | MOUNTING CLIPS (2 Stk.)              | STAINLESS STEEL    |        |      | E      | 600-amc212  |

Surface mounted profile FLEX for flexible LED stripes up to width 12mm, INFO: for Led stripes up to max. 9 Watt

### MIDI CUBE SURFACE

| DETAIL  | PRODUCT                 | L                  | W  | H  | COLOUR | CODE        |
|---|-------------------------|--------------------|----|----|--------|-------------|
|    | PROFILE                 | 2000               | 20 | 27 | W      | 600-a211w   |
|   | PROFILE                 | 2000               | 20 | 27 | S      | 600-a211b   |
|   | PROFILE                 | 2000               | 20 | 27 | AE     | 600-a211s   |
| <b>PRODUCT MATERIAL COLOUR CODE</b>   |                         |                    |    |    |        |             |
|   | END CAPS (Set 2 pcs.)   | PLASTIC            |    |    | W      | 600-aek211w |
|   | END CAPS (Set 2 pcs.)   | PLASTIC            |    |    | S      | 600-aek211b |
|   | END CAPS (Set 2 pcs.)   | PLASTIC            |    |    | S      | 600-aek211s |
|  | COVER                   | PMMA WHITE SATINED |    |    | WO     | 600-c211    |
| <b>PRODUCT MATERIAL COLOUR CODE</b>   |                         |                    |    |    |        |             |
|  | MOUNTING CLIPS (2 Stk.) | STAINLESS STEEL    |    |    | E      | 600-amc211  |

Surface mounted profile MIDI CUBE for flexible LED stripes up to width 12mm, INFO: for Led stripes up to max. 15 Watt


### MAXI SOFT SURFACE

| DETAIL  | PRODUCT                 | L                  | W    | H    | COLOUR | CODE        |
|---|-------------------------|--------------------|------|------|--------|-------------|
|   | PROFILE                 | 2000               | 26,7 | 24,4 | W      | 600-a210w   |
|   | PROFILE                 | 2000               | 26,7 | 24,4 | S      | 600-a210b   |
|   | PROFILE                 | 2000               | 26,7 | 24,4 | AE     | 600-a210s   |
| <b>PRODUCT MATERIAL COLOUR CODE</b>   |                         |                    |      |      |        |             |
|  | END CAPS (Set 2 pcs.)   | PLASTIC            |      |      | W      | 600-aek210w |
|   | END CAPS (Set 2 pcs.)   | PLASTIC            |      |      | S      | 600-aek210b |
|   | END CAPS (Set 2 pcs.)   | PLASTIC            |      |      | S      | 600-aek210s |
|  | COVER                   | PMMA WHITE SATINED |      |      | WO     | 600-c210    |
| <b>PRODUCT MATERIAL COLOUR CODE</b>   |                         |                    |      |      |        |             |
|  | MOUNTING CLIPS (2 Stk.) | STAINLESS STEEL    |      |      | E      | 600-amc210  |

Surface mounted profile MAXI CUBE for flexible LED stripes up to width 18mm, INFO: for Led stripes up to max. 12 Watt


## RIDE PROFILES FOR LED STRIPES FROM ALUMINIUM

### RIDE SURFACE PROFILE

| INFO  | PRODUCT                        | L          | W  | H  | COLOUR | CODE        |          |
|---|--------------------------------|------------|----|----|--------|-------------|----------|
|  | PROFILE                        | 2000       | 35 | 35 | W      | 577-125leer |          |
|   | PROFILE                        | 2000       | 35 | 35 | S      | 577-126leer |          |
|   | PROFILE                        | 2000       | 35 | 35 | AE     | 577-128leer |          |
|   | PROFILE                        | 4500       | 35 | 35 | W      | 577-41005   |          |
|   | PROFILE                        | 4500       | 35 | 35 | S      | 577-41006   |          |
|   | PROFILE                        | 4500       | 35 | 35 | AE     | 577-41008   |          |
|   | <b>PRODUCT FOR COLOUR CODE</b> |            |    |    |        |             |          |
|   | END CAPS (Set 2 pcs.)          | COVER FLAT |    |    |        | W           | 577-4605 |
|   | END CAPS (Set 2 pcs.)          | COVER FLAT |    |    |        | S           | 577-4606 |
|   | END CAPS (Set 2 pcs.)          | COVER FLAT |    |    |        | S           | 577-4604 |
| <b>PRODUCT FOR COLOUR CODE</b>  |                                |            |    |    |        |             |          |
| END CAPS (Set 2 pcs.)   | COVER CUBIC                    |            |    |    | W      | 577-4625    |          |
| END CAPS (Set 2 pcs.)   | COVER CUBIC                    |            |    |    | S      | 577-4626    |          |
| END CAPS (Set 2 pcs.)   | COVER CUBIC                    |            |    |    | S      | 577-4624    |          |


Surface mounted profile RIDE made of extruded aluminium, for flexible LED stripes, available colours: anodised aluminium, black or white powder-coated order end caps and covers separately

### RIDE RECESSED PROFILE

| INFO   | PRODUCT                        | L          | W  | H  | MD | COLOUR | CODE        |
|--|--------------------------------|------------|----|----|----|--------|-------------|
|  | PROFILE                        | 2000       | 44 | 35 | 75 | W      | 577-225leer |
|  | PROFILE                        | 2000       | 44 | 35 | 75 | S      | 577-226leer |
|  | PROFILE                        | 2000       | 44 | 35 | 75 | AE     | 577-228leer |
|  | PROFILE                        | 4500       | 44 | 35 | 75 | W      | 577-41105   |
|  | PROFILE                        | 4500       | 44 | 35 | 75 | S      | 577-41106   |
|  | PROFILE                        | 4500       | 44 | 35 | 75 | AE     | 577-41108   |
|  | <b>PRODUCT FOR COLOUR CODE</b> |            |    |    |    |        |             |
|  | END CAPS (Set 2 pcs.)          | COVER FLAT |    |    |    | W      | 577-4705    |
|  | END CAPS (Set 2 pcs.)          | COVER FLAT |    |    |    | S      | 577-4706    |
|  | END CAPS (Set 2 pcs.)          | COVER FLAT |    |    |    | S      | 577-4704    |
| <b>PRODUCT FOR COLOUR CODE</b>   |                                |            |    |    |    |        |             |
| MOUNTING SET   |                                |            |    |    |    |        | 577-5000    |

Recessed profile RIDE made of extruded aluminium, for flexible LED stripes, available colours: anodised aluminium, black or white powder-coated order end caps and covers separately, mounting depth: 75mm, cutout: width 37mm, profile length less -3mm, **Only flat cover possible!**

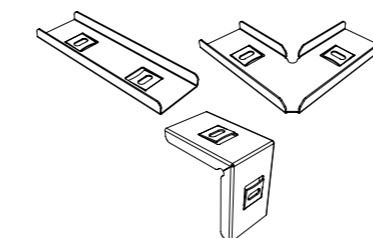
### COVERS FOR RIDE PROFILE

| INFO  | PRODUCT     | L    | W  | H  | COLOUR | CODE      |
|---|-------------|------|----|----|--------|-----------|
|  | COVER FLAT  | 2000 | 35 | 2  | WO     | 577-20pm  |
|   | COVER CUBIC | 2000 | 35 | 35 | WO     | 577-20pmk |
|   | COVER FLAT  | 4500 | 35 | 2  | WO     | 577-42100 |
|   | COVER CUBIC | 4500 | 35 | 35 | WO     | 577-42200 |

Opat cover in PMMA, for recessed profile RIDE, please order only flat cover


### CONNECTOR FOR RIDE PROFILE

| PRODUCT   | CODE     |
|---|----------|
| LINEAR CONNECTOR                                | 577-4300 |
| CORNER CONNECTOR FOR HORIZONTAL LIGHT SOLUTIONS | 577-4400 |
| CORNER CONNECTOR FOR VERTICAL LIGHT SOLUTIONS   | 577-4410 |







## CONVERTER SWITCHABLE

| LED CONVERTER SLIM/U   | INFO   | W  | V DC | L   | W  | H  | COLOUR | CODE      |
|--|--|----|------|-----|----|----|--------|-----------|
|  | LED converter for LED stripes, not dimmable, 230V AC | 13 | 24   | 158 | 22 | 19 | W      | 24-122442 |




| LED CONVERTER EFU  | INFO   | W  | V DC | L   | W  | H  | COLOUR | CODE      |
|--|--|----|------|-----|----|----|--------|-----------|
|  | LED converter for LED stripes, not dimmable, 230V AC | 25 | 24   | 146 | 55 | 19 | W      | 24-122322 |




| LED CONVERTER LCV  | INFO   | W   | V DC | L   | W  | H  | COLOUR | CODE      |
|--|--|-----|------|-----|----|----|--------|-----------|
|  | LED converter for LED stripes, not dimmable, 230V AC | 60  | 24   | 180 | 52 | 30 | W      | 24-127821 |
|  |  | 120 | 24   | 300 | 40 | 30 | W      | 24-127824 |




| LED CONVERTER VPS LP  | INFO   | W  | V DC | L   | W  | H    | COLOUR | CODE      |
|---|--|----|------|-----|----|------|--------|-----------|
|  | LED converter for LED stripes, not dimmable, 230V AC | 50 | 24   | 167 | 59 | 28,5 | W      | 24-127903 |
|   |  | 75 | 24   | 184 | 61 | 28,5 | W      | 24-127905 |




| LED CONVERTER VST  | INFO   | W   | V DC | L   | W  | H  | COLOUR | CODE       |
|--|--|-----|------|-----|----|----|--------|------------|
|  | LED converter for LED stripes, not dimmable, 230V AC | 50  | 24   | 225 | 60 | 36 | W      | 24-122752  |
|  |  | 70  | 24   | 225 | 60 | 36 | W      | 24-122750  |
|  |  | 150 | 24   | 240 | 60 | 49 | S      | 24-122754n |




| LED CONVERTER ST2 IP67   | INFO   | W   | V DC | L   | W  | H  | COLOUR | CODE      |
|--|--|-----|------|-----|----|----|--------|-----------|
|  | LED converter for LED stripes, not dimmable, 230V AC | 70  | 24   | 225 | 66 | 51 | S      | 24-122479 |
|  |  | 150 | 24   | 225 | 66 | 51 | S      | 24-122511 |




| LED CONVERTER HLG IP67   | INFO   | W   | V DC | L   | W  | H  | COLOUR | CODE         |
|--|--|-----|------|-----|----|----|--------|--------------|
|  | Overload protection by current limitation protected against short circuit with automatic restart, overload, overvoltage built-in active PFC circuit, 240W, 24V | 240 | 24   | 244 | 68 | 39 | W      | 647-hlg24024 |




## CONVERTER DIMMABLE

| LED CONVERTER VSTR 1-10V / PUSH / IR  | INFO  | W                            | V DC | L   | W  | H  | COLOUR | CODE      |
|---|---|------------------------------|------|-----|----|----|--------|-----------|
|  | LED converter for LED stripes, dimmable 1-10V & Push Dimm., order IR-Accessories separately | 3 x 40W RGB<br>1 x 100W Weiß | 24   | 240 | 60 | 49 | W      | 24-122730 |



| DALI DT8 / PUSH LED CONVERTER   | INFO  | W  | V DC | L   | W  | H  | COLOUR | CODE         |
|---|---|----|------|-----|----|----|--------|--------------|
|  | LED converter for LED stripes, dimmable DALI DT8 Push Dimm. 2 CHANNEL | 75 | 24   | 486 | 31 | 21 | BR     | 711-24752dt8 |




| DALI / PUSH LED CONVERTER   | INFO  | W  | V DC | L   | W  | H  | COLOUR | CODE         |
|---|---|----|------|-----|----|----|--------|--------------|
|  | LED converter for LED stripes, dimmable DALI Push Dimm. 2 CHANNEL | 30 | 24   | 170 | 54 | 28 | W      | 711-24302dt6 |




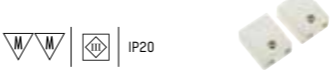
| DALI / PUSH LED CONVERTER  | INFO  | W   | V DC | L   | W  | H  | COLOUR | CODE          |
|--|---|-----|------|-----|----|----|--------|---------------|
|  | LED converter for LED stripes, dimmable DALI Push Dimm. 1 CHANNEL | 150 | 24   | 365 | 43 | 30 | W      | 711-241501dt6 |




| LED CONVERTER QT DALI   | INFO   | W   | V DC | L   | W  | H  | COLOUR | CODE      |
|---|--|-----|------|-----|----|----|--------|-----------|
|  | LED converter for LED stripes DALI dimmable, 230V AC | 50  | 24   | 346 | 32 | 22 | W      | 28-177900 |
|   |  | 80  | 24   | 346 | 32 | 22 | W      | 28-177924 |
|   |  | 160 | 24   | 300 | 50 | 35 | W      | 28-177948 |



## DIMMER



| UNIVERSAL DIMMER  | INFO  | V DC  | L   | W  | H  | COLOUR | CODE       |
|---|---|-------|-----|----|----|--------|------------|
|  | Universal dimmer 1 channel, separate control input for DALI, 1-10V, Push. Syc connection for up to 9 slaves at 1-10V and Push control, max. connection: 5A, order strain relief separately. | 12-50 | 153 | 30 | 21 | W      | 322-ud3000 |
|  | STRAIN RELIEF for 1-channel universal dimmer, 2 pieces  |       |     |    |    |        | 322-ud7001 |

| DALI DT8 / PUSH LED DIMMER - 4 CHANNEL  | INFO  | W      | V DC  | L   | W  | H  | COLOUR | CODE         |
|---|---|--------|-------|-----|----|----|--------|--------------|
|  | Dimmer for Stripes, DALI DT8 for RGB/W order converter separately | 60-180 | 12-36 | 170 | 54 | 28 | W      | 711-24180dt8 |








## LIGHT SCENE CONTROLLER

| DALI DT8 RGBW - TOUCHPANEL  | INFO  | V    | L  | W  | T  | COLOUR | CODE            |
|---|---|------|----|----|----|--------|-----------------|
|  | Light scene controller DALI DT8 for RGB/W LED Stripes, 4 scenes configurable, for mounting in standard-recessed-housing Ø 68mm        | 230  | 86 | 86 | 41 | W      | 711-01230d8rgbw |
| IP20  |   |      |    |    |    |        |                 |
| DALI DT8 TUNABLE WHITE - TOUCHPANEL   | INFO  | V DC | L  | W  | T  | COLOUR | CODE            |
|  | Light scene controller DALI DT8 for tunable white LED Stripes, 4 scenes configurable, for mounting in standard-recessedhousing Ø 68mm | 230  | 86 | 86 | 41 | W      | 711-01230d8tw   |
| IP20  |   |      |    |    |    |        |                 |

## BLUETOOTH CONTROLLER

| PUSH BUTTON INTERFACE   | INFO  | V                 | L    | W   | H  | COLOUR | CODE     |          |
|---|---|-------------------|------|-----|----|--------|----------|----------|
|    | For the integration of standard buttons in the MOLTO LUCE Smart App BLUETOOTH dimm. 3 channel flush-mounted socket module   | 230               | 43   | 43  | 18 | B      | 701-1005 |          |
| BLUETOOTH DIMMER-2 CHANNEL  | INFO  | W                 | V DC | L   | W  | H      | COLOUR   | CODE     |
|   | SED DCC 2CH BLL CONVERTER, PWM dimmable, wire cross-section up to 2.5mm, protection against overheating and short circuit, mains overvoltages, overload, ceiling insert cutout = 40mm, V out = 2 x 24V DC, 4.5A | 2 x 50<br>1 x 100 | 24   | 115 | 34 | 19     | B        | 701-1004 |
| IP20  |   |                   |      |     |    |        |          |          |
| INTERFACE SMART BLUETOOTH TO DALI   | INFO  | V                 | L    | W   | H  | COLOUR | CODE     |          |
|  | For the integration of a maximum of 40 DALI dimmable lights in the MOLTO LUCE Smart App BLUETOOTH dimm. Smart BLUETOOTH to DALI   | 230               | 85   | 30  | 22 | B      | 701-1003 |          |
| IP20  |   |                   |      |     |    |        |          |          |

## MOLTO LUCE SMART APP



The Molto Luce Smart APP is your system for lighting control, regardless of whether it is individual groups, entire networks, scenes, time controls and complex solutions such as heat mapping. The Molto Luce Smart APP provides you with all options.

**DOWNLOAD IN APP OR PLAY STORE**




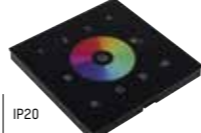
SMART APP INSTRUCTION MANUAL:



## WIRELESS CONTROLLER

| LED LIGHT SCENES CONTROLLER   | INFO  | FOR         | V DC  | L   | W      | T          | COLOUR     | CODE       |
|---|---|-------------|-------|-----|--------|------------|------------|------------|
|    | RGBW radio controller for up to 4 zones, up to 4 scenes, speed and brightness can be adjusted, control can be mounted in standard recessed housing 68mm                     | WIFI / FUNK | 12-24 | 86  | 86     | 10         | S          | 711-000606 |
| IP20  |   |             |       |     |        |            |            |            |
| REMOTE CONTROL  | INFO  | L           | W     | H   | COLOUR | CODE       |            |            |
|    | Radio remote control with color wheel for easy Tunable White control, 2 light colors can be saved, 2 scene selection, dimming levels can be called up in 25% steps          | 120         | 48    | 18  | W      | 711-001106 |            |            |
| REMOTE CONTROL  | INFO  | L           | W     | H   | COLOUR | CODE       |            |            |
|    | Radio remote control for up to 4 zones, up to 4 scenes, speed and brightness can be adjusted, incl. wall fixation   | 140         | 48    | 16  | S      | 711-000506 |            |            |
| REMOTE CONTROL  | INFO  | L           | W     | H   | COLOUR | CODE       |            |            |
|    | Wireless remote control for up to 5 zones for dimming the brightness, remote control can work with up to 8 different receivers  | 136         | 39    | 11  | S      | 711-000906 |            |            |
| WLAN GATEWAY  | INFO  | V DC        | L     | W   | H      | COLOUR     | CODE       |            |
|   | WLAN gateway, for the control of 711-000305, corresponding App EASYColor Pro available free of charge in the Appstore or Playstore integration into in-house wlan possible. | 12-24       | 110   | 85  | 24     | S          | 711-000406 |            |
| IP20  |   |             |       |     |        |            |            |            |
| RGBW WIRELESS DIMMER  | INFO  | W           | V DC  | L   | W      | H          | COLOUR     | CODE       |
|  | 4-channel RGBW radio dimmer for control of RGBW, RGB or white LED stripes, max. load 5A per channel, order power supply separately  | 240-720W    | 12-36 | 179 | 46     | 19         | W          | 711-000305 |
| IP20  |   |             |       |     |        |            |            |            |
| WIRELESS DIMMER TUNABLE WHITE   | INFO  | W           | V DC  | L   | W      | H          | COLOUR     | CODE       |
|  | 2-channel radio dimmer for controlling Tunable White LED Stripes max.5A / channel, order power supply separately  | 110-240W    | 12-24 | 145 | 47     | 16         | W          | 711-001005 |
| IP20  |   |             |       |     |        |            |            |            |

## DMX CONTROLLER

| DMX RGBW LED DIMMER   | INFO   | V DC   | L     | W  | H  | COLOUR | CODE       |            |
|---|--|--------|-------|----|----|--------|------------|------------|
|  | RGBW LED dimmer DMX 12-36V, 12V - 36V DC, suitable to control RGBW LED stripes, max. load 5A per channel             | 12-36  | 178   | 46 | 18 | W      | 711-000705 |            |
| IP20  |  |        |       |    |    |        |            |            |
| LED LIGHT SCENES CONTROLLER   | INFO   | FOR    | V DC  | L  | W  | T      | COLOUR     | CODE       |
|  | Light scene controller DMX for RGB/W Stripes, 4 scenes configurable, for mounting in standard-recessedhousing Ø 68mm | DMX II | 12-24 | 86 | 86 | 10     | S          | 711-000806 |
| IP20  |  |        |       |    |    |        |            |            |